



MANUAL TRANSMITTAL

Department of the Treasury
Internal Revenue Service

3.5.10

NOVEMBER 27, 2024

EFFECTIVE DATE

(01-01-2025)

PURPOSE

- (1) This transmits revised IRM 3.5.10, Accounts Services, Remittance Transaction Research (RTR) System.

MATERIAL CHANGES

- (1) IRM 3.5.10.6.1(2) - Added Automated Collections user group to Level 10 Access .IPU 24U0677 issued 05-22-2024
- (2) IRM 3.5.10.6(8) - Replaced information with specific steps for RTR account deactivated due to 120 days of inactivity. (IPU 23U0767 issued 06-23-2023)
- (3) IRM 3.5.10.6(9) - Added specific steps for RTR account access after deactivated due to 120 days of inactivity. (IPU 23U0767 issued 06-23-2023)
- (4) Minor editorial changes have been made throughout this IRM (e.g., spelling, punctuation, spacing, etc.).

EFFECT ON OTHER DOCUMENTS

IRM 3.5.10, Accounts Services, Remittance Transaction Research (RTR) System, dated November 14, 2023 (effective January 1, 2024), is superseded. This IRM incorporates the following IRM procedural updates (IPU's): IPU 24U0677 issued 05-22-2024 .

AUDIENCE

All campuses that research payment information

James L. Fish
Director, Submission Processing
Taxpayer Services

3.5.10

Remittance Transaction Research (RTR) System

Table of Contents

3.5.10.1 Program Scope and Objectives

3.5.10.1.1 Background

3.5.10.1.2 Authority

3.5.10.1.3 Responsibilities

3.5.10.1.4 Program Management and Review

3.5.10.1.5 Program Controls

3.5.10.1.6 Acronyms

3.5.10.1.7 Related Resources

3.5.10.2 General Information

3.5.10.2.1 IRM Deviation Procedures

3.5.10.2.2 Taxpayer Advocate Service, National Service Level Agreements (SLAs)

3.5.10.2.3 The Remittance Transaction Research (RTR) System

3.5.10.2.4 Remittance Transaction Research (RTR) System Contingency for Lockbox Vouchers

3.5.10.3 Using the Remittance Transaction Research (RTR) System

3.5.10.4 Knowledge of Windows and Web-Based Environments

3.5.10.5 The Remittance Transaction Research (RTR) User Guide, Training Course 11415

3.5.10.6 Chapter 1 - Remittance Transaction Research (RTR) Access

3.5.10.6.1 User Group Levels

3.5.10.6.1.1 Instructions to Add/Delete Approvers for RTR

3.5.10.7 Remittance Transaction Research (RTR) Internet Access

3.5.10.7.1 Log On/Off the Remittance Transaction Research (RTR) System

3.5.10.8 Chapter 2 - Research

3.5.10.8.1 Research Screen

3.5.10.8.2 Results Screen

3.5.10.8.3 Detail Screen

3.5.10.8.3.1 Payment Information

3.5.10.8.3.2 Notes

3.5.10.8.3.3 Multiple/Split Payments

3.5.10.8.3.4 Images

3.5.10.9 Chapter 3 - Remittance Transaction Research (RTR) Administrative Functions

3.5.10.9.1 Viewing/Editing Remittance Processing System Identification (RPSID) Ranges (Level 30 Users)

3.5.10.9.2 Viewing/Editing Interest Rates (Level 40 Users)

3.5.10.10 Chapter 4 - Reports

3.5.10.10.1 Generating the Daily Deposit Timeliness Report

3.5.10.10.2 Generating The Deposit Activity Report

-
- 3.5.10.10.3 Generating The Performance Metrics Report
 - 3.5.10.10.4 Generating The Reconciliation Report
 - 3.5.10.10.5 Generating the Remittance Processing System Identification (RPSID) Range Summary Report

3.5.10.1
(01-01-2020)
Program Scope and Objectives

- (1) **Purpose:** This IRM describe the users of the Remittance Transaction Research (RTR) system application and what restrictive levels are used.
- (2) **Audience:** The primary users of this IRM are Accounts Management, Submission Processing, Compliance and Campus and Field Sites.
- (3) **Policy Owner:** The Director of Submission Processing.
- (4) **Program Owner:** Return Processing Branch, Mail Management / Data Conversion Section (an organization within Submission Processing).
- (5) **Primary Stakeholder:** Receipt and Control Deposit function Clerks, Batch Schedulers, and Managers. Data Conversion Remittance Processing System (RPS) Clerks and Managers.

3.5.10.1.1
(11-14-2017)
Background

- (1) The Remittance Transaction Research (RTR) system is a universal access researchable database that contains remittance processing data and images from IRS Integrated Submission and Remittance Processing (ISRP) system, Lockbox Bank processing sites, and Remittance Strategy Paper Check Conversion (RS-PCC).

3.5.10.1.2
(01-01-2020)
Authority

- (1) The following provides authority for the instructions in this IRM to be performed in support of completing compliance functions to make credits or refunds of any internal revenue tax, processing of non-revenue forms, and administrative support forms:
 - Title 26 of the United States Code (USC) or more commonly known as the Internal Revenue Code (IRC).
 - Code sections which provide the IRS with the authority to issue levies.
 - Congressional Acts which outline additional authorities and responsibilities like the Travel and Transportation Reform Act of 1998 or the Tax Reform Act of 1986.
 - Policy Statements that provide authority for the work being done.

3.5.10.1.3
(11-14-2017)
Responsibilities

- (1) The Operations manager secures, assigns, and provides training for the staff needed to perform the task required throughout this instruction.
- (2) The Planning and Analysis Staff provides feedback and support to local management to achieve and effectively monitor scheduled goals.
- (3) The team manager assigns, monitors, and controls the workflow to accomplish timely completion of the tasks required throughout this IRM.

3.5.10.1.4
(11-14-2017)
Program Management and Review

- (1) **Program Reports:** The following reports are used to manage and review the Remittance Transaction Research System:
 - a. Daily Deposit Timeliness Report
 - b. Deposit Activity Report
 - c. Performance Metrics Report
 - d. Reconciliation Report
 - e. RPSID (Remittance Processing System Identification) Range Summary Report
- (2) **Program Effectiveness:** Goals will be measured utilizing standard managerial reports by documents processed per hour and completion of each function

compared to the established schedule for completion each week. Each functionality is expected to retain or exceed schedule prior to the program completion date stated in IRM 3.30.123, Work Planning and Control Processing Timeliness: Cycles, Criteria, and Critical Dates. Quality reviews are expected to be conducted and monitored by local management and corrective action taken to ensure quality products are released to the next function.

- (3) **Annual Review:** Review the processes included in this manual annually to ensure accuracy and promote consistent tax administration. This may be included under responsibilities for a manager.

3.5.10.1.5
(01-01-2022)
Program Controls

- (1) Remittance Transaction Research access is granted through the Business Entitlement Access Request System (BEARS) process.
- (2) Security level monitoring.

3.5.10.1.6
(01-01-2020)
Acronyms

- (1) The following acronyms are used throughout this IRM:

Acronym	Description
Admin	Administrator
AMS	Account Management Services
COE	Common Operation Environment
CSR	Customer Service Representatives
DLN	Document Locator Number
ECC	Enterprise Computing Center. The Martinsburg and Tennessee Computing Centers (previously named MCC and TCC) were realigned into this one organization.
ECC-MEM	ECC Memphis
ECC-MTB	ECC Martinsburg
EIN	Employer Identification Number
EOps	Enterprise Operations
ERS	Error Resolution System
FSP	Functional Specification Package
HQ	Headquarters
IDRS	Integrated Data Retrieval System
IDTVA	Identity Theft Victim Assistance
IRM	Internal Revenue Manual
IRSN	Internal Revenue Service Number
ISRP	Integrated Submission and Remittance Processing

Acronym	Description
IT	Information Technology
ITIN	Individual Taxpayer Identification Number
MF	Master File. Note: Individual Master File (IMF) or Business Master File (BMF).
MFT	Master File Tax Code
MM/DD/YYYY	Month, Day, Century and Year. Example: 12/31/2021 is December 31, 2021.
RPSID	Remittance Processing System Identification; also known as the batch number. Each block of work is assigned its own unique number
RS-PCC	Remittance Strategy for Paper Check Conversion
RTR	Remittance Transaction Research
SB/SE	Small Business/Self-Employed
SPC	Submission Processing Campus
SSN	Social Security Number
TE	Tax Examiner
TIN	Taxpayer Identification Number
TS	Taxpayer Services
YYYYMM	Century and Year, Month. Note: 202104 is April 2021.

3.5.10.1.7
(11-14-2017)

Related Resources

- (1) IRM 3.8.44, Deposit Activity - Campus Deposit Activity
- (2) IRM 3.30.123, Work Planning and Control Processing Timeliness: Cycles, Criteria, and Critical Dates.

3.5.10.2
(01-01-2020)

General Information

- (1) The Remittance Transaction Research (RTR) system is a researchable database that contains remittance processing data and images from the IRS Integrated Submission and Remittance Processing (ISRP) system, Remittance Strategy for Paper Check Conversion (RS-PCC) and Lockbox Bank processing sites.

3.5.10.2.1
(01-01-2020)
**IRM Deviation
Procedures**

- (1) IRM deviations must be submitted in writing following instructions from IRM 1.11.2.2, Internal Management Documents System - Internal Revenue Manual (IRM) Process, IRM Standards, and elevated through appropriate channels for executive approval.

3.5.10.2.2
(01-01-2017)
**Taxpayer Advocate
Service, National Service
Level Agreements
(SLAs)**

- (1) The National Taxpayer Advocate has reached agreements with the Commissioners of the Taxpayer Services (TS) , Small Business/Self-Employed (SB/SE) Division, Tax Exempt and Government Entities (TE/GE) Division, and Large Business and International (LB&I), that outline the procedures and responsibilities for the processing of Taxpayer Advocate Service (TAS) casework when either the statutory or delegated authority to complete case transactions rests outside of TAS.
- (2) The SLAs are located at <http://tas.web.irs.gov/> “under the heading “TAS Favorites” and select SLA-Service Level Agreements.”
- (3) The Taxpayer Advocate Service (TAS) is an independent organization within the IRS whose employees assist taxpayers who are experiencing economic harm, who are seeking help in resolving tax problems that have not been resolved through normal channels, or who believe that an IRS system or procedure is not working, as it should. TAS criteria include economic burden, systemic burden, best interest of the taxpayer, and public policy (as determined solely by the National Taxpayer Advocate (NTA). TAS is responsible for assisting taxpayers who have unresolved problems with the IRS. Additional information on hardship criteria can be found in IRM 13.1.7, Taxpayer Advocate Service (TAS) Case Criteria.
- (4) If the IRS employee receives taxpayer contact that meets TAS criteria, and the employee cannot initiate action to resolve the taxpayer’s inquiry or provide the relief requested by the taxpayer, refer the case to TAS. A taxpayer should not have to request TAS assistance to be referred to TAS. IRS employees will advise taxpayers of the option to seek TAS assistance when appropriate. TAS will request documentation from the taxpayer to support the requested relief, or when required by the IRM.
- (5) A referral to a TAS office is not necessary even if a TAS case criterion is met if an Operating Division or Function can immediately resolve the issue within 24 hours. It is important that all IRS employees handle potential TAS cases with the taxpayer’s best interest in mind. More information on “24-hour” same day resolution can be found in IRM 13.1.7.5, Same Day Resolution by Operations.
- (6) If action can be taken within 24 hours to resolve the taxpayer’s issue however, the taxpayer requests TAS assistance or is not satisfied with the service provided, refer the taxpayer to the NTA toll-free number, 1-877-777-4778 or TTY/TDD 1-800-829-4059. Refer to IRM 21.1.3.18, Taxpayer Advocate Service (TAS) Guidelines, for more information.

3.5.10.2.3
(01-01-2016)
**The Remittance
Transaction Research
(RTR) System**

- (1) RTR provides universal access to a consolidated database of remittance data and images generated at ISRP, RS-PCC, and Lockbox Bank processing sites. This system permits research of data and images stored up to seven years on the RTR system. It also provides immediate retrieval for images.
- (2) The RTR web application is available via the IRS internet.

3.5.10.2.4
(01-01-2022)

**Remittance Transaction
Research (RTR) System
Contingency for
Lockbox Vouchers**

- (1) If the RTR system is down, the bank site will print an image of the voucher from their system and will include all endorsement/audit trail information on the front of the voucher as required by Functional Specification Package (FSP) 1.35.04.13. The endorsement data will be printed directly below the front of a voucher image.
- (2) The Submission Processing Campus (SPC) may request either:
 - a. Copies of vouchers for individual transactions that have error, use Command Code Error Resolution Inventories (CC ERINV) to create an individual transaction report; or,
 - b. Copies of vouchers for blocks that contain error transactions.
- (3) Upon the SPC's request for a hard copy of images, the bank site will print images at the block or individual transaction level and ship/fax to the SPC as defined below.

Note: The type of request will be at the discretion of the SPC.

- (4) For individual transaction requests received **prior to 10:00 AM local time**, the bank site will:
 - a. Print the vouchers displayed on the listing.
 - b. Attach the copies of the voucher to the back of the listing.
 - c. Depending on the volume, and the SPC's preference, ship or fax the vouchers on the same day.

Note: The bank site will coordinate the method of transportation with the SPC.

- (5) If the request is received **after 10:00 AM local time**, the bank site will ship or fax the vouchers no later than the next business day.
- (6) Upon receipt of a block transaction request, the bank site will:
 - a. Print all vouchers within the identified blocks in sequential order.
 - b. Prepare the blocks for shipment in folders with corresponding document lists included.
 - c. Send the vouchers to the SPC in the overnight shipment no later than the following business day.
- (7) Anytime within 30 days of processing the payment, the bank site will provide individual or block transaction data upon request as noted above. Submission Processing Campuses will continue to be able to request individual copies of vouchers and checks after thirty days.

3.5.10.3
(01-01-2017)

**Using the Remittance
Transaction Research
(RTR) System**

- (1) RTR provides access to remittance processing data and images for TS Organizations that includes:
 - Customer Account Services (CAS)
 - Customer Assistance, Relationships and Education (CARE)
 - Return Integrity and Compliance Services (RICS)
 - Small Business/Self-Employed Division (SB/SE)
 - Criminal Investigation (CI)
 - Disclosure
 - National Taxpayer Advocate Service (TAS)

RTR facilitates and expedites business user efforts to reconcile taxpayer payments, balance daily deposits, and respond to customer service inquiries. RTR business users can query the RTR database to access remittance transaction data and images. RTR users have different access group levels that restrict or allow them to print various reports and add notes to transactions.

- (2) RTR users access the system with a web browser (e.g., Microsoft Internet Explorer) via their local campus, or area office. System hardware and software requirement include a Common Operation Environment (COE) converted workstation connected to a LAN and access to Microsoft Internet Explorer.

3.5.10.4
(01-01-2016)
**Knowledge of Windows
and Web-Based
Environments**

- (1) The user should have a basic understanding of Windows and web-based environments and how to use the mouse, menu, or key commands. Specifically, users must be able to:
 - Log on/off Windows.
 - Use Button bars and pull-down menus.
 - Understand concepts such as click, double-click, and select.

3.5.10.5
(01-01-2016)
**The Remittance
Transaction Research
(RTR) User Guide,
Training Course 11415**

- (1) The RTR User Guide, or Training Course 11415, is both a training tool and a reference tool. It can be referenced by all RTR users.
- (2) You can access the user guide by clicking on the Help button on any RTR screen.
- (3) The RTR Training Course 11415, is available on the Enterprise Learning Management System (ELMS).
- (4) The structure of the RTR User Guide is as follows:
 - Chapter 1 defines the user group access levels and explains how to log on/off the RTR system.
 - Chapter 2 explains how to use the Research function to query for records and defines the various screens.
 - Chapter 3 defines the capabilities of the RTR Administrator (depending on the user level) and explains how to use the Admin function.
 - Chapter 4 defines the various reports available and explains how to use the Reports function to access these reports.

3.5.10.6
(06-23-2023)
**Chapter 1 - Remittance
Transaction Research
(RTR) Access**

- (1) An Business Entitlement Access Request System (BEARS) must be submitted to request access to RTR. Employees and/or Managers are responsible for inputting BEARS. The employee and/or Manager will select one appropriate BEARS Application Name for their area of location.
- (2) Managers will determine who has access to the RTR system. Managers will input the group level needed per IRM 3.5.10.6.1, User Group Levels, in the special remarks section in BEARS or no permissions will be granted. After management approval the BEARS request will be delivered electronically to the BEARS administrator for action.
- (3) Access to RTR is unlimited for the Taxpayer Services (TS) Customer Account Services (CAS), Submission Processing and Accounts Management functions.
- (4) Access is provided for Small Business/Self Employed (SB/SE) - Compliance and Disclosure offices, Commissioner's Office-Taxpayer Advocate Service

employees, TS Care- Field Assistance (FA) and for Criminal Investigation (via the Web based Intranet) also on an unlimited access request per area.

- (5) Once approved, the user will access the system with their Windows username (SEID), Data System domain, and Local Area Network (LAN) password, or SmartID card pin. A separate login identification and password will not be assigned.
- (6) Access is granted to Information Technology (ITS) EOps-System Administrators (via operating system) and Data Base (DBA) (via database system).
- (7) The system has a time out function that will disconnect the user after 15 minutes of inactivity. There is a two-minute warning box that will display that the system will be closing out due to inactivity, you can click continue or logout. If the user returns to the system after being disconnected, you will have to log in again.
- (8) Due to the new security functions within RTR, users will now receive two separate emails indicating their RTR account will be deactivated due to 120 days of inactivity.
 - a. The first email will be generated indicating you have not accessed RTR within the last 106 days. If you don't login to RTR within the next 14 days, your RTR access will be disabled.
 - b. The second email will be generated indicating you have not accessed RTR within the last 113 days. If you don't login to RTR within the next 7 days, your RTR access will be disabled. Once a user account has been deactivated, users will see a message box on the RTR Login screen that reads: "Your account is deactivated due to inactivity for more than 120 days". See IRM 3.5.10.6(9) below to regain access to RTR information.
- (9) To regain access to RTR after the user account has been deactivated, users **must submit two BEARS requests..**
 - a. The **first BEARS request** is to remove RTR from the user profile in BEARS. The user must indicate in the BEARS request the name of the RTR Application to be deleted. The BEARS request will be approved/implemented within seven to ten days.
 - b. Once a user receives an email from **BEARS@irs.gov** indicating BEARS Account changes were processed, **submit a second BEARS request** to regain access to RTR. If second BEARS request is not submitted, users will not have access to RTR until the second BEARS request has been submitted **and** approved.

Note: Do not open an IRWorks ticket. Any IRWorks ticket opened regarding the deactivation of the user's account will be automatically closed.

3.5.10.6.1 (05-22-2024) User Group Levels

- (1) Currently, there are seven user groups levels that may access the RTR system. The employee's user group level will depend on the type of work they perform as well as the unit the employee is assigned to.
- (2) The user group levels are:

Level	Function	Affected Areas	Research Access Criteria
00	Submission Processing	Hard Core Payment Tracers Bank Discrepancies Data Control Note: Redesign Revenue Accounting Control System (RRACS) moved under Chief Financial Office.	Date range of six months, ability to add/read notes, Max 5000 records returned, ability to sort records, wildcard document locator number (DLN) search.
05	Submission Processing	Error Resolution System (ERS) Unpostables Notice Review Excess Collections Unidentified Remittance Dishonored Checks Receipt and Control	Date range of two months, ability to add/read notes, Max 1000 records returned
10	Accounts Management	Statute Accounts Maintenance Adjustments Automated Collections Toll-Free Taxpayer Relations (TPR) Compliance Collection Policy Offer in Compromise (OIC) Note: Compliance Services Collection Operations (CSCO) employees working Individual Master File (IMF)/ Business Master File (BMF) Taxpayer Delinquency Investigation (TDI) Transcripts will only request access to this group level and put in special instructions on BEARS request. Collection OIC employees will request RTR LEVEL 10 USERS KCSLOGON (CONSOLIDATED RTR ACCESS - KCSC) on BEARS. Note: Employees in Account Management Identity Theft Victim Assistance (IDTVA) will select access at Andover.	Date range of two months, ability to read notes, Max 1000 records returned

Level	Function	Affected Areas	Research Access Criteria
15	Compliance	Revenue Officers SB/SE Automated Collections Taxpayer Advocate Service (TAS) Customer Assistance, Relationships and Education (CARE) Disclosure Field Assistance Criminal Investigation (CI) Note: This note only applies to CI. Employee will need a Basin LAN account to DS domain for access.	Perform search using TIN or partial DLN, combined with the Site Code and deposit date range, which cannot exceed 30 days. Ability to search using a complete DLN without any additional search criteria. Results will display up to 500 records returned.
20	ECC-MEM ECC-MTB	Information Technology/Enterprise Operations (ITS/EOps)	Update main menu messages, run performance metrics reports, process offline requests
30	Administrators		Ability to update RPSID ranges, level 10 research abilities, run deposit reports
40	Reports Administrators		Ability to update interest rates, level 10 research abilities, run all reports

3.5.10.6.1.1 (02-01-2022)

Instructions to Add/Delete Approvers for RTR

- (1) Instructions to Add/Delete Approvers for BEARS for RTR following the steps below.

1. Click on **Internet Explorer or Microsoft Edge**.
2. Click on **OS GetServices**
3. Click on **Order from the Product and Services Catalog**
4. In the **Search Service Catalog** box type BEARS, then click on the forward arrow, or press the Enter key
5. Click on **BEARS**
6. Your name should appear under the **Order information Requested By/Requested For** box.
7. Under **Select Change Type**, click on **BEARS Administrative Change** box.
8. Click on the drop-down arrow under **Select Change Area** and choose Approval group (workgroup administration/create new workgroup).
9. In the **Enter Change Description** box, type in the RTR Application name you are requesting to be an approver for or the application name you are requesting your approver rights be deleted. The application name should be the area in which you need to be an approver, or the area you are requesting your approver/denial rights be deleted.
Example to Delete BEARS approver/denial rights for RTR: Please delete approver/denial rights for BEARS for RTR for the following application: RTR LEVEL 05 USERS-COV17 (CONSOLIDATED RTR ACCESS-CSC)

Example to Approve BEARS for RTR: Please add approver/denial rights for BEARS for RTR for the following application: RTR LEVEL 05 USERS-COV17 (CONSOLIDATED RTR ACCESS-CSC)

10. Copy the information you typed in the Enter Change Description box. You will need this for Justification when you checkout.
11. Click **Add to Cart**
12. Click on **View Cart/Checkout**
13. Click on **Checkout**
14. In the **Purpose** box, paste the information that you typed in the Enter Change Description box.
15. Click **Submit**.

3.5.10.7
(01-01-2022)

**Remittance Transaction
Research (RTR) Internet
Access**

- (1) The user must first log onto Windows. To access RTR, open Internet Explorer and type the following in the address line: <https://rtr.web.irs.gov/rtr>. Press Enter or <GO>. The RTR LOGIN Screen appears. Figure 3.5.10-1.

RTR Login

THIS U.S. GOVERNMENT SYSTEM IS FOR AUTHORIZED USE ONLY!

Use of this system constitutes consent to monitoring, interception, recording, reading, copying or capturing by authorized personnel of all activities. There is no right to privacy in this system. Unauthorized use of this system is prohibited and subject to criminal and civil penalties, including all penalties applicable to willful unauthorized access (UNAX) or inspection of taxpayer records (under 18 U.S.C. 1030 and 26 U.S.C. 7213A and 26 U.S.C. 7431). Policy and Guidance 10.8.1 page 61 Cat.

Login

Figure 3.5.10-1 RTR LOGIN Screen

- (2) Enter the following information on the LOGIN screen:
 - a. **Username:** Enter your current Windows login username.
 - b. **Password:** Enter your current Windows login password.
 - c. **Domain:** Enter your DS domain.

Note: The Domain fields may be populated. Your username and Windows password may be required entry. If Login populate click on login button.

 - d. Click on login button to go to RTR homepage or submit or press enter key once all information has been entered.
 - e. If you receive the following error message, "Your active directory domain account does not have the correct permissions to access the RTR application," contact the HELP desk to have your account updated. **Do not** open a Knowledge, Incident/Problem, Service Asset Management (KISAM) ticket.

- (3) To create a shortcut on your desktop from the RTR screen, go to the **File** Menu. Select **Send**. Select **Shortcut to Desktop**.
- (4) You can also create a shortcut by right clicking on your desktop. Select **New**. Select **Shortcut**. Type the RTR Internet access address: <https://rtr.web.irs.gov/rtr> into the command line box. Click Next. Type RTR as the name for the shortcut. Click Finish to create the shortcut.
- (5) Access to RTR is provided in three manners:
 - a. a menu option on the Account Management Services (AMS) home page under systems in the tool bar on the left side of the screen.
 - b. an icon on the users' desktop.
 - c. a menu option on the Employee User Portal (EUP) under applications on the left side on the screen.

Reminder: Access is granted to users via the Automated Business Entitlement Access Request System.

3.5.10.7.1

(01-01-2022)

**Log On/Off the
Remittance Transaction
Research (RTR) System**

- (1) Follow the steps below to log on to the RTR system.

Step	Action	
1	Log on to Windows.	
2	Use the table below to determine your next steps	
	If...	Then...
	you are accessing RTR from within a case in AMS	1. Select "RTR" from the Systems heading on the left-hand Toolbar on the AMS Home Page.
	you are accessing RTR from your Windows NT/Windows desktop	Double-click on the RTR User icon. Result: The RTR LOGIN page appears. Figure 3.5.10-1.
3	Enter your username, if not present, and press the <Tab> key.	
4	Enter your password and press the <Tab> key.	
5	Enter your domain, if not present.	
6	Click the <Submit> button or press the <Enter>key. Result: The RTR Home page appears. Figure 3.5.10-2	

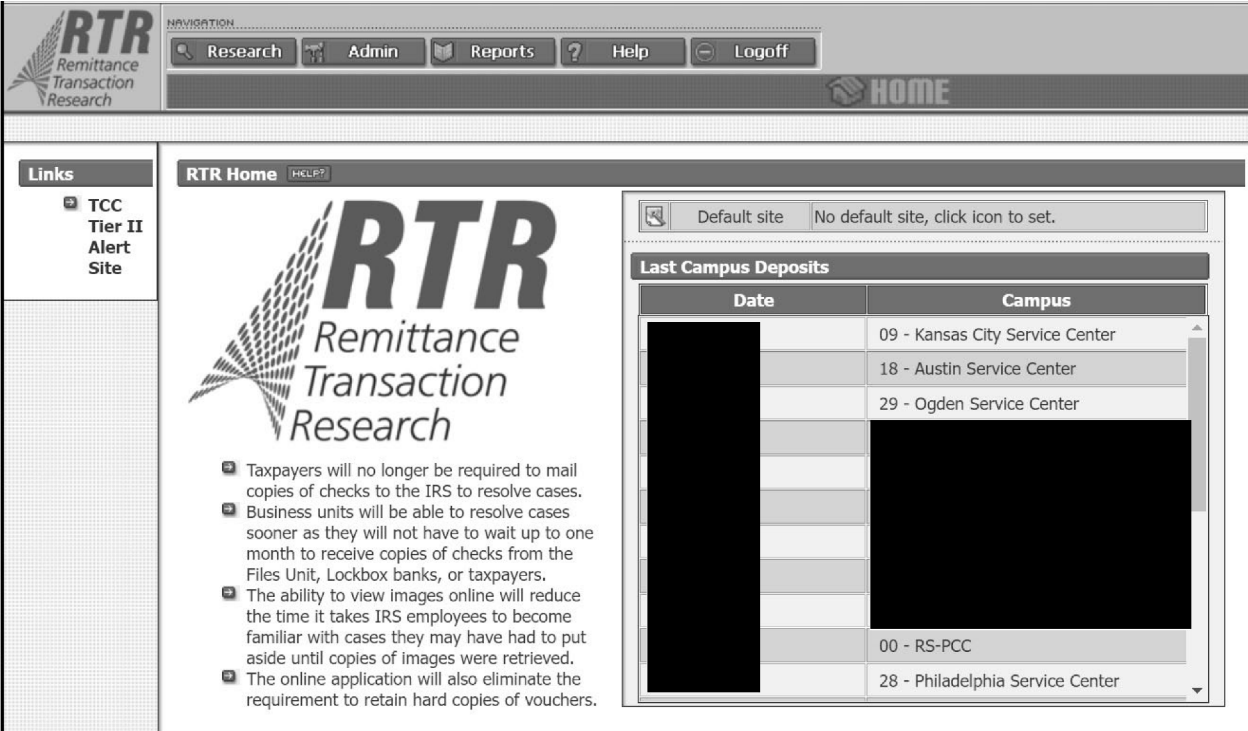


Figure 3.5.10-2 RTR Home Page

Number	Element	Description
1	Links Tennessee Computer Center Tier II Alert Site	Provides link to ECC-MEM alert web site for information about the system status such as program changes made or scheduled down time.
2	System Back-ground	High level description of the system.
3	Default Site Selection	User must select a default site for research upon initial login. It can be changed at any time.
4	Last Campus Deposits	Updated daily with latest deposit information.
5	New Image Requests	Updated when offline image requests have been loaded.

(2) Follow the steps below to log off the RTR system.

Step	Action
1	Click the <LOGOFF> button at the top of the screen. Result: The logout dialog box appears.

Step	Action
2	Logout Dialog: Are you sure you want to log out of the RTR application? Click the <Yes> button to log out of the RTR system. Result: The RTR application will close. Click the <No> button to continue research.

3.5.10.8
(01-01-2016)
Chapter 2 - Research

- (1) When performing a query (research) for records, it is critical to enter as much information as possible in order to narrow your research request. A query initiated with minimal information could have debilitating affects to the system. Ranges may be used to help limit research. A wildcard may be used when partial information for a field is known.
- (2) This section covers the following topics:
 - a. Research Screen
 - b. Results Screen
 - c. Detail Screen
 - d. Notes
 - e. Multiple/Splits
 - f. Images

3.5.10.8.1
(01-01-2022)
Research Screen

- (1) The Research Screen will prompt the user for information necessary to research the payment database. Payments may be researched using the following information:
 - a. DLN
 - b. Trace Identification
 - c. Deposit Date
 - d. Transaction Date
 - e. Transaction Code
 - f. Money Amount
 - g. Tax Period
 - h. MFT
 - i. Name Control
 - j. TIN
 - k. Batch Number
 - l. Routing Number
 - m. Site Code
- (2) **Range function-** Dates, money amounts and transaction codes may be re-searched using the range function. This can be useful in researching payments when the exact date or amount is not known. Ranges should be as narrow as possible while still allowing an adequate search.

Example: The taxpayer states that they made a payment of \$102 and “some odd cents”. The payment may be researched by entering an amount range from \$102.00 to \$103.00.

Note: Do **not** enter an excessive range request such as \$100.00 to \$150.00. This would result in an increase in the system response time and the number of result records.

- a. Date ranges are limited based on user group level. Group levels, 05 and 10 are limited to a two-month range. User Group Level 00 is limited to a six-month range.
 - b. If requesting an exact search, enter one date, money amount or transaction code.
- (3) **Wildcard entries-** A wildcard entry is when partial information is used in a field for researching payments. There are four fields which allow a wildcard-TIN, DLN, Routing Number and Name Control (NC). The wildcard may be used to designate either a single or group of characters and may be used anywhere within the field. Except when used in the DLN, the wildcard (*), must be the last entry in the field. It cannot be a leading character or embedded within other characters..

Note: When searching for actual name control, you should enter as many of the characters as possible, followed by (*).

Example: If looking for IMF payments processed at a specific site on a specific date, then input **752*100*3** in the DLN field..

Note: A wildcard used in the DLN field requires a minimum of site code and deposit date digits to be entered.

Note: This function is limited to Level 00 users.

- (4) **Research request** - Follow the steps below to submit a research request.

Step	Action
1	Click the <Research> button at the top of the RTR Home page. Result: The Research Screen appears as shown in Figure 3.5.10-3a. below.

:RTR:

RTR
Remittance
Transaction
Research

NAVIGATION: Research Admin Reports ? Help Logoff

RESEARCH

ISR13

RTR Research: enter criteria [HELP]

Directions: Please enter your research criteria. When searching for a specific deposit date, transaction date, amount, or transaction code, enter the specific information into the corresponding 'from' form fields. When searching for a specific campus, regardless of the lockbox, select the campus from the dropdown and select the 'campus only search' checkbox. Note: When searching using a wildcard, please enter at least one character before the '*', i.e. "g*"

Please choose your research criteria:

DLN: - - - -

Deposit Date

From: Julian Day Month Day Year

To: Julian Day Month Day Year

Transaction Code: -

Tax Period: (YYYYMM)

Name Control:

Batch Number:

Site Code: (09 - Kansas City Service Center)

☐ Campus Only ☐ Lockbox Only ☐ Both

Trace ID:

Transaction Date

From: Month Day Year

To: Month Day Year

Amount: - ☐ Check ☐ Transaction

MFT:

TIN:

Routing Number:

Submit Reset New Search

Home | Research | Admin | Reports | Help | Logoff

Limited Official Use.

<https://rtr.enterprise.irs.gov:9125/rtr/research/research.do?editSearch=false>[9/25/2014 10:38:58 AM]

Figure 3.5.10-3a RTR Research Screen

Input Data	Description
Deposit Date	Date the check was deposited. Note: Required field.
Transaction Date	Date the payment was posted to Master File (MF). Also known as the received date of the payment.
Transaction Code	Payment transaction code used to post the payment to MF.
Money Amount	Amount of the payment.
Tax Period	Tax period to which the payment was applied.
MFT	Master File Tax code to which the payment was applied.
TIN	Taxpayer identification number to which payment was applied. It may be an SSN, EIN, ITIN, ATIN, or IRSN.
DLN	Payment DLN. This is the complete "14" digit identifier assigned to each payment. It is entered without hyphens.
Routing Number	Routing number for the financial institution on which the payment was drawn.
Name Control	Name Control on the account to which the payment was applied.
Batch Number	This is also known as the RPSID. Each block of work is assigned its own unique number.
Site Code	Site responsible for processing the payment. The user may search campus, Lockbox or both. The default site is selected upon initial login. The Both option button is set as the default. Note: Required field.
Trace ID	This is the 20-digit identifier assigned to each Deposit Ticket and Debit Voucher payments.

Input Data	Description
Note: Date entries are broken down into three fields.	Month, Day and Year. All three fields are required for a valid date entry.

Figure 3.5.10-3b Research Screen Input Data

Step	Action
2	Click in the field on which to base the research request. Note: To move from field to field, click the mouse in the appropriate field or press the <Tab> key.
3	Type the appropriate information. Note: Every search requires a minimum of three entries—Deposit Date, Site Code, and one additional field. This may be any of the other remaining fields.
4	Do you wish to clear the information and enter new research criteria? <ul style="list-style-type: none"> If yes, click the <Reset> button and return to Step 2 If no, go to Step 5.
5	Click the <Submit> button. Result: A message stating “Retrieving Your Results Please Wait” appears. Note: If you wish to stop the search, click the <Stop> button.
6	Was the search successful? (The Results Screen will display showing the list of records meeting the research criteria.) <ul style="list-style-type: none"> If yes, IRM 3.5.10.8.2, Results Screen. If no, go to Step 7.
7	Use the table below to determine your next step.

If ...	and ...	then ...
you received a warning message due to the search results containing more than 5,000 records	you are in User Group 00	continue with the search by clicking the <Yes> button; or cancel the search by clicking the <No> button. Note: There is no limit on the result records for User Group 00.

If ...	and ...	then ...
you received an error message due to the search results containing more than 1,000 records	you are in User Group 05 or 10	re-input the search with additional information to narrow the search.
No records were found		verify the search criteria and correct if necessary.
The search criteria were correct		resubmit the search by widening the search criteria.

3.5.10.8.2
(01-01-2022)

Results Screen

- (1) The Results Screen will be displayed showing the results of any query initiated. The screen contains a list of all records meeting the query criteria entered. Figure 3.5.10-4. below.

Figure 3.5.10-4 Results Screen

- (2) Record elements :
- Deposit Date
 - MFT
 - TIN
 - Name Control
 - Amount
 - Routing Number
 - Transaction Date
 - DLN
 - Tax Period

j. Transaction Code

- (3) **Viewing transactions-** Each page of results contains 20 transactions. These are not listed in any specific order. Refer to the table below for instructions on viewing transactions. Figure 3.5.10-4. Results Screen.

If you wish to ...	then ...
view the details of the record	click on the deposit date of any individual transaction. Note: IRM 3.5.10.8.3 for information/ instructions regarding the Detail Screen.
view another page of 20 records	click on the page numbers in the lower right corner. Note: Ten pages are available to view at a time.
display page 11 and make the next 10 pages available for viewing	click the <Next> button.
return to the previous 10 pages	click the <Prev> button.

- (4) **Sorting records-** To perform a sort, try flittering results to less than 5,000 records. An error message will be displayed stating,“ The number of search results found exceeds the sorting limit. In order to perform a sort, try to filter your results to less than 5000 records.”

a. Follow the steps below to sort records.

Note: This option has the potential to put strains on the system that can negatively affect system performance and, therefore, should be used sparingly.

Step	Action
1	On the Results Screen, click the column title you wish to sort on. Result: All records (not just the page) are re-sorted in ascending order.
2	Click the column title again to re-sort in descending order.
3	Repeat Steps 1 and 2 for sorting records by any column.

- b. **Filtering records-** When multiple records are returned on a query, the results may be filtered to reduce the number further. This option is often used in lieu of starting a new query. Filter options are limited to Transaction Date, Money Amount, Transaction Code, and MFT. Follow the steps below to filter records.

Step	Action
1	On the Results Screen, click on the appropriate field for which filter criteria will be input.
2	Enter the filter criteria. Note: More than one field may be used.
3	Click the <Filter Results> button. Result: The remaining records meeting the new criteria are displayed.
4	Repeat Steps 1 through 3 to continue to filter on results. Note: Each repeated filter is conducted on new record set.

- c. **Initiate a new search-** Follow the steps below to initiate a new search.

Step	Action
1	On the Results Screen, click the <New Search> button (at the bottom) or click the <Research> button (at the top). Result: The Results Screen closes and the Research Screen reappears.
2	Perform Steps 2 through 7 at IRM 3.5.10.7.1(3a), Research Request.

3.5.10.8.3
(01-01-2020)
Detail Screen

- (1) The Detail Screen will be displayed once a record is selected from the results screen. This screen contains the detailed information of each payment instrument processed through the transports. Figure 3.5.10-5.
- (2) The Detail Screen contains four sections. The following components are listed below:
 - a. Payment information – includes Document Remittance Register Details and Endpoint Master Listing Information
 - b. Notes
 - c. Multiple/Split information
 - d. Images

The screenshot displays the RTR System interface. At the top, there is a navigation bar with links for Research, Admin, Reports, Help, and Logoff. Below this, the document ID 'ISR1340' is shown. The main content area is divided into several sections:

- Document Remittance Register Details:** A table with columns: Deposit Date, MFT, TIN, Name Control, Amount, Routing Number, Transaction Date, Block DLN, DLN Sequence, Tax Period, and Transaction Code. All fields are currently blank.
- Endpoint Master Listing Information:** A table with columns: Batch Number, Batch Sequence, DLN, Trace ID, Routing Number, and Amount. All fields are currently blank.
- Remittance Form - F813:** A button to view the remittance form.
- Endpoint Form:** A button to view the endpoint form.
- Notes:** A section with a table for recording notes. The table has columns: Type, Date, Created By, and Text. It currently shows 'No notes recorded.' and an 'Add a Note' button.
- Checks/Vouchers:** A section with a table for recording checks and vouchers. The table has columns: Front, Back, Voucher, All, Batch Seq, Amount, and Routing Number. It currently shows a single entry with a check icon in the Front column, a blank Batch Seq, and blank Amount and Routing Number.

At the bottom left, there is a '<< Back' button.

Figure 3.5.10-5 Detail Screen

3.5.10.8.3.1
(01-01-2020)
Payment Information

- (1) Payment information includes the Document Remittance Register Details and the Endpoint Master Listing Information. Elements included in these areas are shown below.

Document Remittance Register Details

Term	Description
Deposit Date	This is the date used for the deposit. (MM/DD/YYYY)
MFT	This is part of the header information and is applied to all documents in the same block DLN.
TIN	This is used for posting a payment to a taxpayer's account. The field is entered with no dashes.
Name Control	This is used to help identify proper application of the payment to the taxpayer's module. There may not always be data in this field.
Amount	This is the money amount of the credit posted to the taxpayer's account. This amount will not always match the check amount. (i.e., Multiple/Splits)
Routing Number	Series of numbers taken from the bottom of the taxpayer's check. These numbers indicate the taxpayer's bank.

Term	Description
Transaction Date	This is representative of the actual transaction date of the payment and will post to the taxpayer's module as such. (MM/DD/YYYY)
DLN Sequence	This is the two-digit unique identifier of the DLN. Each payment will have its own number.
Tax Period	This is used for posting a payment to a taxpayer's account. (YYYYMM)
Transaction Code	This is the payment transaction code used in the block header and is indicative of how the payment posted to the taxpayer's module.

Endpoint Master Listing

Term	Description
Batch Number	This is also known as the RPSID. Each block of work is assigned its own unique number.
Batch Sequence	Each payment is assigned a sequence number as it is processed through ISRP. This number is not the same as the sequence number used in a DLN.
DLN	This is the complete "14" digit identifier assigned to each payment.
Trace ID	This is the "14" digit identifier assigned to each Deposit Ticket and Debit Voucher payments.
Routing Number	Series of numbers taken from the bottom of the taxpayer's check. These numbers indicate the taxpayer's bank.
Amount	This is the amount of the check processed.

- (2) Follow the steps below to access the remittance form (Form 813).

Step	Action
1	Click the <Remittance Form> button. Result: A separate window opens containing the Form 813 information. Figure 3.5.10-6. below. Note: This form contains all payment data processed within the related block of work.

ISR1341

REMITTANCE RESEARCH TRANSACTION SYSTEM
RRPS DOCUMENT REMITTANCE REGISTER

System Date

System Time

Deposit Date

Seq	TIN	Name	Tax Period	Amount	Transaction Date
00					
01					
02					
03					
04					
05					
06					
07					
08					
09					
10					
11					
12					
13					
14					
15					
16					
Doc Total		Total Amount		Block DLN	

Limited Official Use

Figure 3.5.10-6 Form 813, Remittance Form

Step	Action
2	Click the <Print> button/icon on the browser tool bar to print the Form 813.
3	Click the <BACK> button to return to the Detail Screen.

- (3) Follow the steps below to access the Endpoint Form (known as the Endpoint Form Master Listing).

Step	Action
1	Click the <Endpoint Form> button. Result: A separate window opens containing the Endpoint Master Listing information. Figure 3.5.10-7 below. Note: This form contains all payment data processed within the related batch of work.

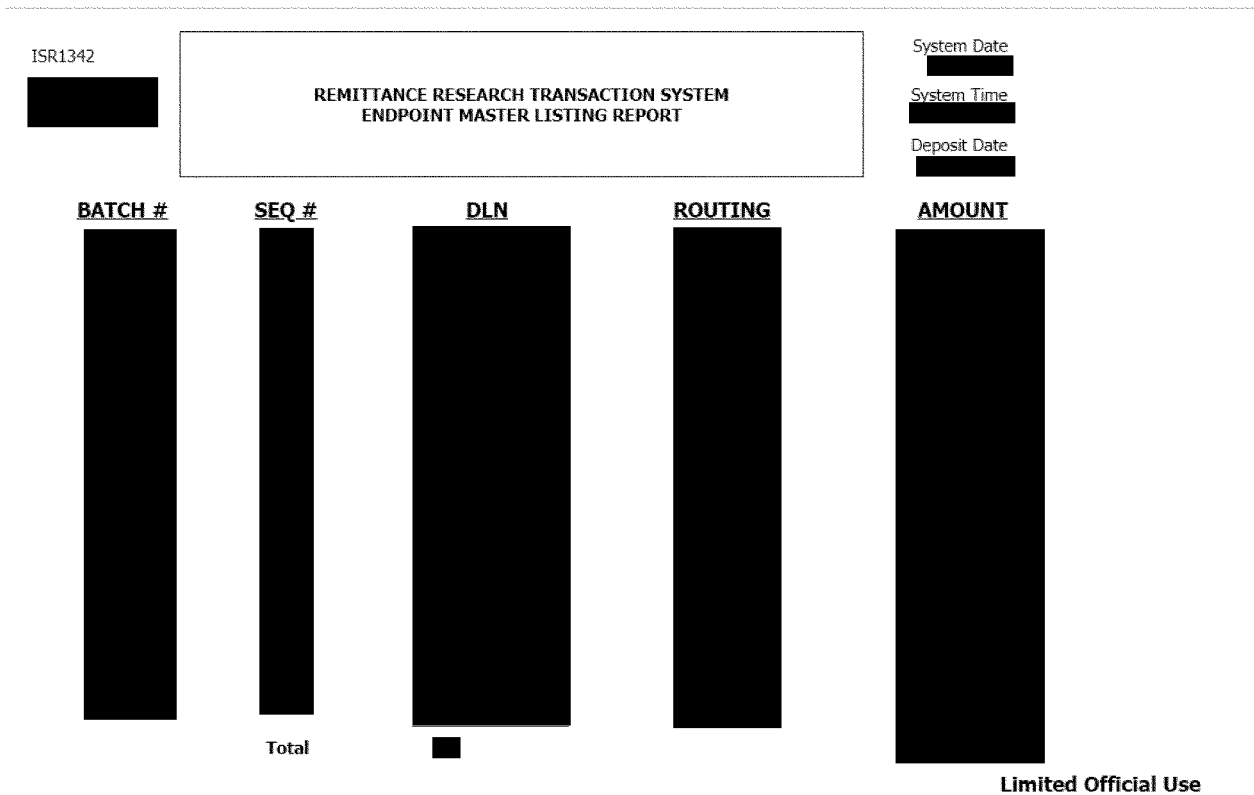


Figure 3.5.10-7 Endpoint Master Listing Report

Step	Action
1	Click the <Print> button/icon on the browser toolbar to print the Endpoint Master Listing.
2	Click the <<BACK button to return to the Detail Screen.

3.5.10.8.3.2
(01-01-2020)
Notes

- (1) Notes are used to record changes or deletions made to either an individual record or a block of records prior to posting to Master File. The addition of a note is restricted to Levels 00 and 05. The viewing of a note is unrestricted by Levels 00, 05 and 10.
- a. Notes should contain enough information to allow users to track a payment record to the point at which it posts to a taxpayers account.
 - b. Once posted, changes or movement of credits are tracked through Master File via IDRS.

Example: A block of work is deleted and renumbered. A note should be added to indicate this.

- (2) Follow the steps below to add a note.

Step	Action
1	Click the <Add a Note> button. Results: The Add Note window appears.

Step	Action
2	Choose a note type by clicking once on either: <ul style="list-style-type: none"> • Add note to the transaction • Add note to the block
3	Choose type of note from drop-down menu.
4	Click the mouse pointer in the Note Text window and type the note information. Note: A maximum of 2000 characters are allowed. If you wish to clear the information and retype the note, click the <Reset> button.
5	Click the <Submit> button when completed. Note: The user's login name and date will automatically be added to the end of the record.

- (3) Once a note is added, it cannot be changed. If an error is made, an additional note will need to be added. Follow the steps below to correct a note.

Step	Action
1	Follow Steps 1 through 4 above for adding a note.
2	Include corrected information in your text as well as a reference to the previous incorrect note.

- (4) If a note is attached to a record, the first line of each note will be displayed on the screen with the date, initiator's login name, and the type of note. Follow the steps below to view the full details of the note.

Step	Action
1	Click on the text line of the individual note to be viewed. Result: A separate window opens displaying the details of the note.
2	Click the <<BACK button to return to the Detail Screen.
3	To view the next note, click the text line of the next note and repeat Steps 1 and 2.

3.5.10.8.3.3
(01-01-2022)
Multiple/Split Payments

- (1) Most payments received involve a single payment instrument for a single taxpayer's account. Occasionally, there may be multiple payment instruments for a single account (Multiple) or a single payment may be designated for more than one account (Split). These payments are identified prior to processing and are coded with an "M" (Multiple) or "S." (Split). When passed through the transports, all cross-reference data will be captured and passed to RTR.
- (2) The Multi/Split indicator will be visible if payment was coded as such.
- (3) Follow the steps below to view the cross-reference information:

Step	Action
1	Click the Show button. Result: All cross reference information is displayed.
2	Click the Hide button to return to normal view.

- (4) Follow the steps below to view cross reference records.

Step	Action
1	Click on any record listed to view the Detail Screen of the selected record.
2	Click the <Back> button to return to the original screen.
3	Repeat Steps 1 and 2 to view each individual record.

3.5.10.8.3.4
(01-01-2022)
Images

- (1) Each payment record may have up to three images available. These include:
 - a. front of check
 - b. back of check
 - c. voucher
- (2) Not all payments will have a voucher image. Some records may not have any images available. Buttons indicating images available will be displayed in the Checks/Vouchers area.
- (3) Payment images less than 7 years old are stored online and are available for immediate access. A request for retrieval of these images is made via RTR. Images are made available the same business day.
- (4) Follow the steps below to view images.

Step	Action
1	Click the Image button for the image you want to view (Front, Back, Voucher).

Step	Action
2	Click the <<BACK button to return to the Detail Screen.
3	Repeat Steps 1 and 2 to view each image available.

- (5) Follow the steps below to request offline images.

Step	Action
1	Click the image button for the image you want to view (Front, Back, Voucher). Result: A message window appears stating, "The image is not available. Click <Submit> to request image."
2	Click the <Submit> button to request the image be loaded. Result: The image will be available the next business day.
3	The next day, the users home page will list all the images requested. <ul style="list-style-type: none"> Click on each individual record to activate the associated image. Initiate a query of the record to view the image as normal.

3.5.10.9

(01-01-2022)

Chapter 3 - Remittance Transaction Research (RTR) Administrative Functions

- (1) The Administrator for RTR will be able to view or edit the (Remittance Processing System ID) RPSID ranges, current and future interest rates and process requests for offline images. This chapter will provide guidance on the first two items in the order in which they appear on the Admin Menu.

Note: The user must be profiled with the appropriate user group prior to log on. IRM 3.5.10.6.1, User Group Levels, and IRM 3.5.10.7.1, Log On/Off the Remittance Transaction Research (RTR) System, for login procedures.

Note: The offline image request information, for User Group 20, is included in the System Operator's Guide.

- (2) This chapter covers the following topics.

- Viewing/Editing RPSID Ranges (Level 30 Users).
- Viewing/Editing Interest Rates (Level 40 Users).

3.5.10.9.1

(01-01-2020)

Viewing/Editing Remittance Processing System Identification (RPSID) Ranges (Level 30 Users)

- (1) The Integrated Submission and Remittance Processing (ISRP) system converts paper tax and information documents, and remittances received by IRS into perfected electronic records of taxpayer data. When a tax document is received, it is opened and sorted by form type; for example, Form 1040 and Form 1040-A. Remittances with their accompanying documentation are presorted into groups called batches and a unique number, Remittance Processing System Identification (RPSID) will appear on the back of the archived remittance image of the payment (check, money order, etc.). For more extensive information concerning the RPSID, refer to IRM 3.5.61.3.75, Form CT-2, Employee Representative's Quarterly Railroad Tax Return (OSPC only).

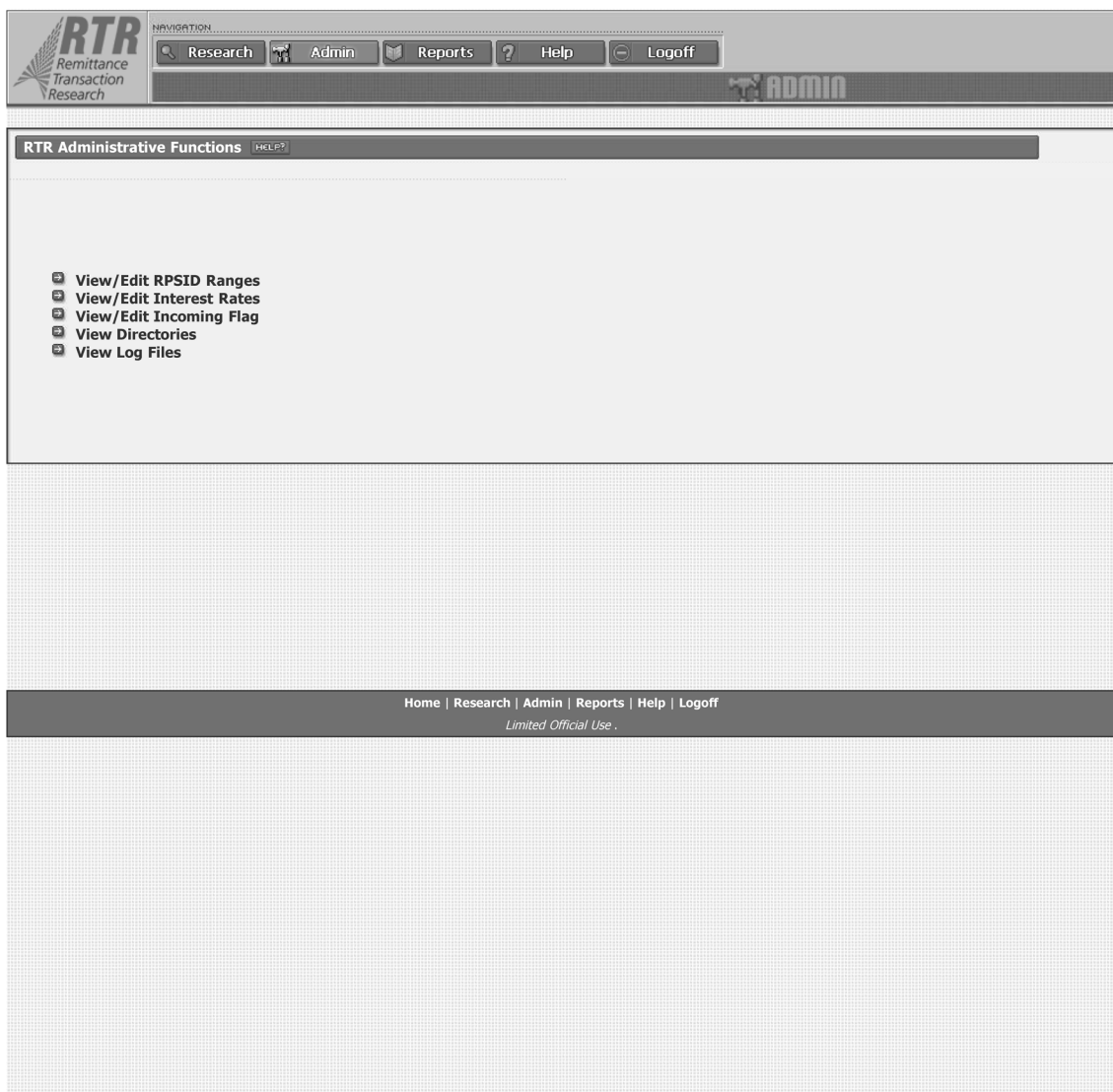
- (2) RPSID ranges are used to collect, sort and report data on both the Daily and Monthly Deposit Timeliness reports as well as the Deposit Activity report. Therefore, changes to the RPSID ranges will affect these reports.

Note: Changes should be done by designated Headquarters (HQ) personnel only.

- (3) Follow the steps below to view or edit RPSID ranges.

Step	Action
1	Click the <Admin> button at the top of the RTR Home page. Result: The RTR Administrative Functions menu appears. Figure 3.5.10-8

:RTR:



<https://rtr.enterprise.irs.gov:9125/rtr/admin/admin.do>[9/25/2014 10:50:57 AM]

Figure 3.5.10-8 RTR Administrative Functions Window

Step	Action
2	<p>Click on “View/Edit RPSID Ranges.”</p> <p>Result: The RPSID Ranges screen appears. Figure 3.5.10-9</p> <p>Note: This display provides a view of the current RPSID ranges.</p> <p>Note: If RPSID ranges were not previously edited or added, only the current RPSID ranges (left side) will appear.</p>

:RTR:

RTR
Remittance
Transaction
Research

NAVIGATION
Research Admin Reports ? Help Logoff

ADMIN

Current RPSID Ranges
RPSID Ranges last updated: 10-01-1997

RPSID Name	RPSID Start Range	RPSID End Range
All ranges	0	999999
Perfect Remit	1	489999
Manual Deposit	490000	496999
Discovered Remit	497000	499999
Field Office	500000	589999
OIC Fee	590000	599999
Lockbox	600000	609999
Payment Perfection	610000	769999
Perfect Mis-Directed	770000	789999
Imperfect Mis-Directed	790000	799999
Transport	800000	999999
Insolvency	0	0

Edit RSPID << Back

Home | Research | Admin | Reports | Help | Logoff
Limited Official Use .

[https://rtr.enterprise.irs.gov:9125/rtr/admin/getRPSID.do?mapping=viewRPSID\[9/25/2014 10:55:05 AM\]](https://rtr.enterprise.irs.gov:9125/rtr/admin/getRPSID.do?mapping=viewRPSID[9/25/2014 10:55:05 AM])**Figure 3.5.10-9 Current RPSID Ranges Window**

Step	Action
3	Are changes required (editing the current RPSID range values or adding a new range)? <ul style="list-style-type: none">• If yes, go to Step 4.• If no, go to Step 13.
4	Click the <Edit RPSID> button. Result: The Edit RPSID names and ranges screen appears. Figure 3.5.10-10

::RTR::

Page 1 of 1

Edit RPSID names and ranges

Directions: Edit the current values of RPSID ranges, or add a new range. Be sure that the ending range is exactly one less than the starting range of the next row. Select a future date on which these changes will occur.

Changes will be effective on:
Month 10 Day 01 Year 2014

RPSID Name	RPSID Start Range	RPSID End Range
All ranges	0	999999
Perfect Remit	1	489999
Manual Deposit	490000	496999
Discovered Remit	497000	499999
Field Office	500000	589999
OIC Fee	590000	599999
Lockbox	600000	609999
Payment Perfection	610000	769999

Submit Add New Range Reset Cancel

<https://rtr.enterprise.irs.gov:9125/rtr/admin/getRPSID.do?mapping=updateRPSID&rangeI...> 9/26/2014

Figure 3.5.10-10 RPSID Name and Ranges

Step	Action
5	Do you wish to edit the current values of RPSID ranges? <ul style="list-style-type: none"> If yes, go to Step 6. If no, go to Step 7.
6	Click in the RPSID Start and End Range columns and edit the values. Then go to Step 11.
7	Click the <Add New Range> button. Result: A blank is inserted to add the new range. Figure 3.5.10-11

RTR Remittance Transaction Research

Navigation: Research Admin Reports Help Logout

Edit RPSID names and ranges

Directions: Edit the current values of RPSID ranges, or add a new range. Be sure that the ending range is exactly one less than the starting range of the next row. Select a future date on which these changes will occur.

Changes will be effective on:
Month Day Year

RPSID Name	RPSID Start Range	RPSID End Range
Field Office	500000	589999
OIC Fee	590000	599999
Lockbox	600000	609999
Payment Perfection	610000	769999
Perfect Mis-Directed	770000	789999
Imperfect Mis-Directed	790000	799999
Transport	800000	999999

Buttons: Submit Add New Range Reset Cancel

Left sidebar: Current RPSID Range, RPSID Ranges last, RPSID Name, All ranges, Perfect Remit, Manual Deposit, Discovered Remit, Field Office, OIC Fee, Lockbox, Payment Perfection, Perfect Mis-Directed, Imperfect Mis-Directed, Transport, Edit RPSID

Figure 3.5.10-11 Edit RPSID Names and Ranges

Step	Action
8	Enter the RPSID Name and press the <Tab> key.
9	Enter the RPSID Start Range and press the <Tab> key.
10	Enter the RPSID End Range.
11	Enter or select the effective date (Month, Day, Year) from the drop-down menu. Note: This date must be a future date.

Step	Action
	Use the <Reset> button to clear the new entries or change edited entries back to the original settings.
12	Do you wish to complete the changes? <ul style="list-style-type: none">• If yes, click the <Submit> button.• If no, click the <Cancel>button to return to the previous menu.
13	Click the <Back> button to return to the RTR Administrative Functions menu.

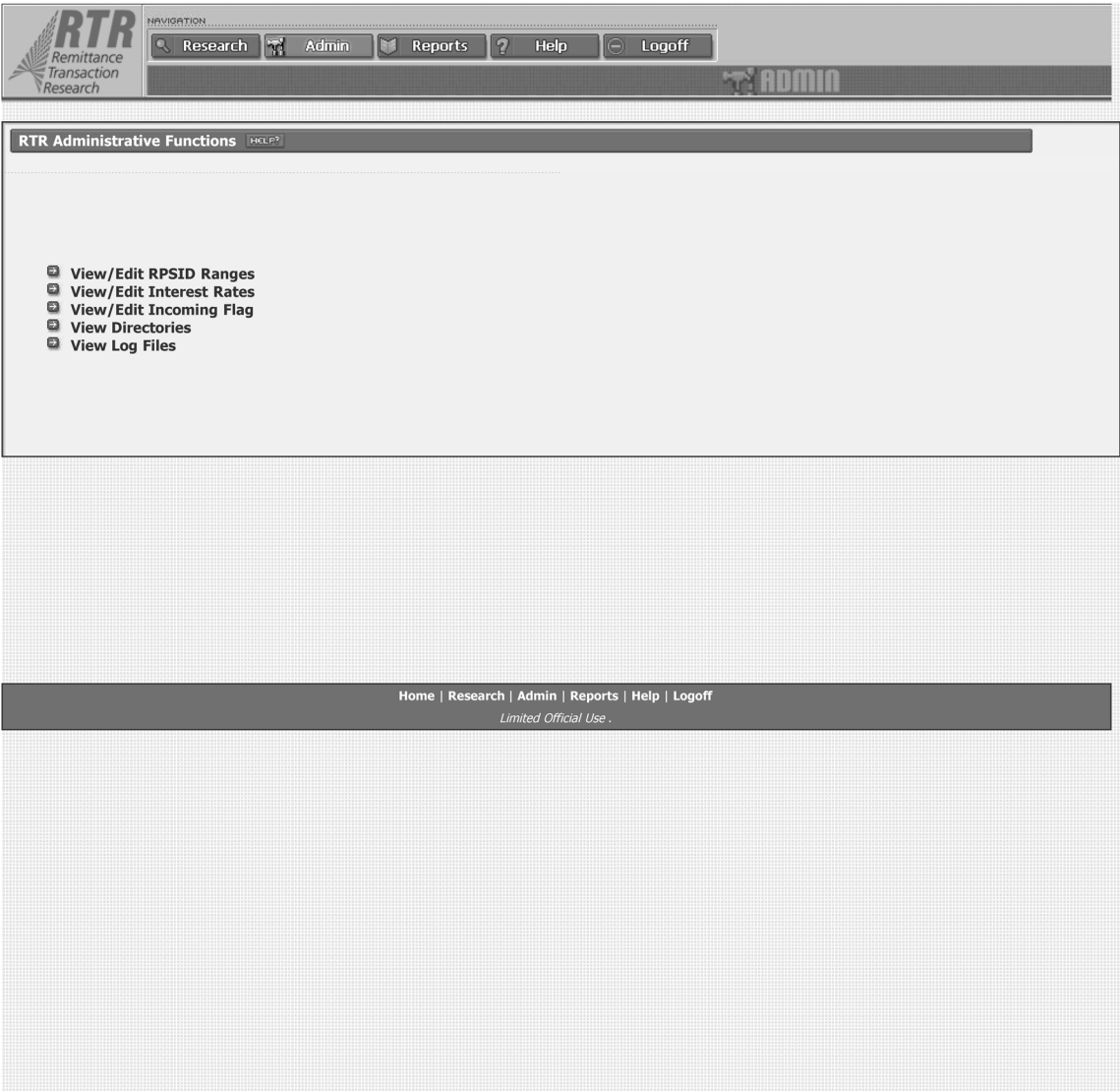
3.5.10.9.2
(01-01-2022)
**Viewing/Editing Interest
Rates (Level 40 Users)**

- (1) Interest rates are subject to change every three months and should be adjusted accordingly.
 - a. Interest rates are used in calculations and report data on both the Daily and Monthly Deposit Timeliness reports. Therefore, changes to the interest rate will affect these reports.

Note: Changes should be done by designated Headquarters (HQ) personnel only.
- (2) Follow the steps below to view or edit the interest rates.

Step	Action
1	Click the <Admin> button at the top of the RTR Home page Result: The RTR Administrative Functions menu appears. Figure 3.5.10-12

..RTR::



<https://rtr.enterprise.irs.gov:9125/rtr/admin/admin.do>[9/25/2014 10:50:57 AM]

Figure 3.5.10-12 RTR Administrative Functions

Step	Action
2	Click on "View/Edit Interest Rates." Result: The Current Interest Rate screen appears. Figure 3.5.10-13

The screenshot shows the RTR (Remittance Transaction Research) system interface. At the top left is the RTR logo. To its right is a navigation bar with tabs for Research, Admin, Reports, Help, and Logoff. Below the navigation bar is a header area with the text 'Current Interest Rate' and 'Interest rate last updated: 10-01-1997'. In the center, there is a table with one row showing the 'Current Interest Rate' as '0.08'. At the bottom of the screen, there are two buttons: 'Edit Interest Rate' and '<< Back'.

Figure 3.5.10-13 Current Interest Rate

Step	Action
3	Are changes required? <ul style="list-style-type: none">• If yes, go to Step 4.• If no, go to Step 8.
4	Click the <Edit Interest Rate> button. Result: The Edit Interest Rate screen appears. Figure 3.5.10-14 Note: This display will provide fields for the date and interest rate to be changed.

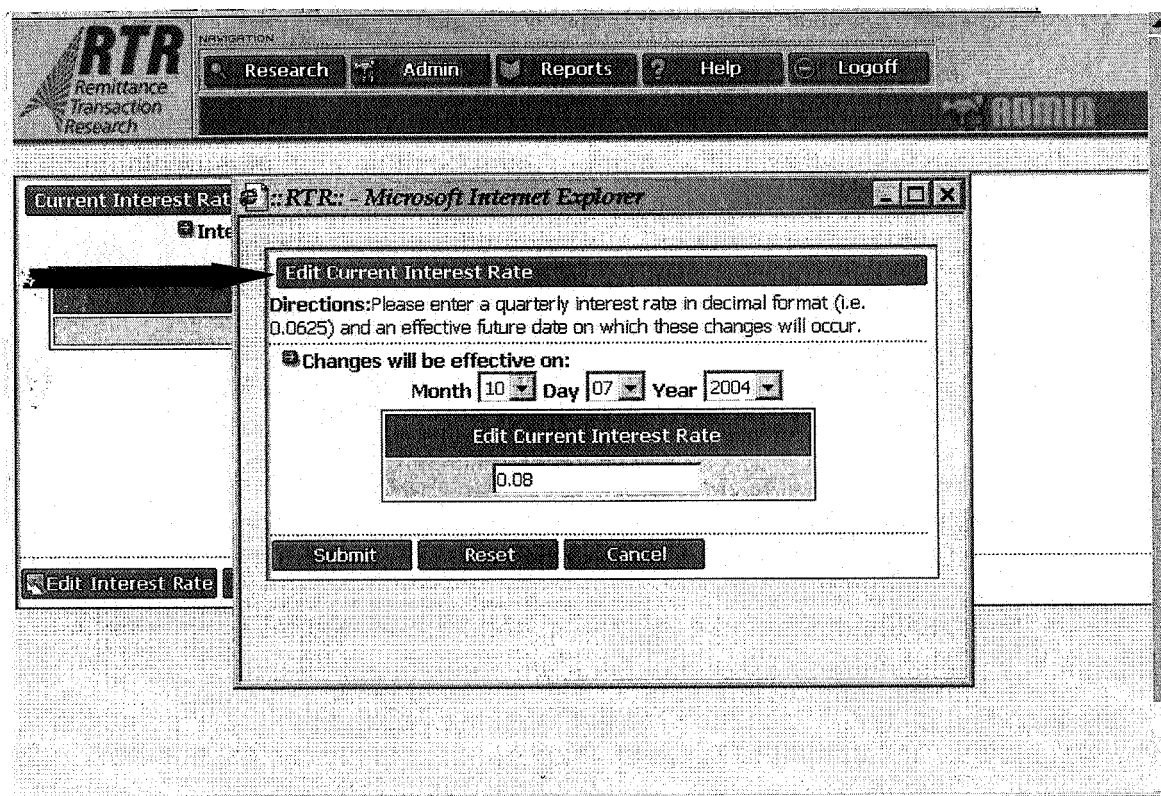


Figure 3.5.10-14 Edit Future Interest Rate

Step	Action
5	Enter the effective month, day and year in the respective columns (or use the drop-down menu from each field) to select the future date on which the change(s) will occur. Note: This date must be a future date.
6	Enter the interest rate in decimal point format. Example: use .0625 for 6.25 percent. Note: The system will not allow changes to the current days interest rate.
	Use the <Reset> button to change the interest rate and effective date back to the original settings.
7	Do you wish to complete the changes? <ul style="list-style-type: none"> If yes, click the <Submit> button. If not, click the <Cancel> button to retain the original settings and return to the previous menu.
8	Click the <Back> button to return to the RTR Administrative Functions Menu.

3.5.10.10
(01-01-2016)
Chapter 4 - Reports

- (1) The RTR system will have the ability to generate five types of reports:
 - a. Daily Deposit Timeliness Report
 - b. Deposit Activity Report
 - c. Performance Metrics Report
 - d. Reconciliation Report
 - e. RPSID Range Summary Report
- (2) Only User Group Levels 20, 30 and 40 can generate or have access to some or all of these reports.
- (3) This section covers the following topics:
 - a. Generating the Daily Deposit Timeliness Report
 - b. Generating the Deposit Activity Report
 - c. Generating the Performance Metrics Report
 - d. Generating the Reconciliation Report
 - e. Generating the RPSID Range Summary Report

3.5.10.10.1
(01-01-2022)
**Generating the Daily
Deposit Timeliness
Report**

- (1) The Daily Deposit Timeliness Report provides information on daily deposits made at any of the sites. It is based upon:
 - a. Dates
 - b. RPSID Ranges
 - c. Site Names
- (2) This report is used in the measurement of deposit timeliness as required by the Balanced Measures criteria. The report calculates the Lost Opportunity Cost of deposits not made within the required 24-hour period. The formula for this calculation is based on 365 days at an interest rate of 8%.

Note: Only User Levels 30 and 40 or administrators can access this report.

- a. The formulas in the table below will be used to calculate lost opportunity cost for (1) non-RS-PCC processed payments, and (2) RS-PCC processed payments.

(1) Non-RS-PCC Payments	(2) RS-PCC Payments
The RTR Software shall calculate the opportunity cost for non-RS-PCC payments using the following formula if the Deposit Date is not equal to the next business day following the Transaction Date: (Deposit Date - the next business day after the Transaction Date) * (Transaction Amount * (interest rate / 365).	The RTR Software shall calculate the opportunity cost for RS-PCC payments using the following formula if the Deposit Date is not equal to the next business day following the Transaction Date: (Deposit Date - the second business day after the Transaction Date) * (Transaction Amount) * (interest rate / 365).

(1) Non-RS-PCC Payments	(2) RS-PCC Payments
The RTR Software shall calculate the opportunity cost for non-RS-PCC payments as zero if the Deposit Date is the next business day following the transaction date, or the same day as the transaction date, or less than the Transaction Date.	The RTR Software shall calculate the opportunity cost for RS-PCC payments as zero if the Deposit Date is the next business day after the Transaction Date, the same day as the Transaction Date, or earlier than the Transaction Date.

(3) Follow the steps below to generate the Daily Deposit Timeliness Report.

Step	Action
1	Click the <Reports> button at the top of the RTR Home page. Result: The RTR Reports menu appears..Figure@Exhibit 3.5.10-16

RTR Reports [HELP?]

Please choose a report type:

- ☒ **Daily Deposit Timeliness Report:** View/Print past Remittance Transaction Register Daily Deposit Timeliness Site Code reports. Reports based upon dates, RPSID Ranges, and Site Names.
- ☐ **Deposit Activity Report:** Monthly report that calculates percentages of timely deposits within perfect remittances. Reports based upon date and Site Name.
*Note: This report requires only a month and year as a run date.
- ☐ **Performance Metrics Report:** View/Print past Remittance Transaction Register Performance reports.
- ☐ **Reconciliation Report:** View/Print Remittance Transaction Register Reconciliation Report.
- ☐ **Load Report:** View/Print Load Report.
- ☐ **Remittance Register Report - F813:** View/Print Remittance Transaction Register Report.
- ☐ **End Point Master Listing:** View/Print Remittance Transaction Register End Point Master Listing Report.
- ☐ **Audit Log Report:** View/Print Audit Log Report.
- ☐ **RPSID Range Summary Report :** View/Print RPSID Range Summary Report.

Please choose a report date:

Month Day Year

Home | Research | Admin | Reports | Help | Logoff
Limited Official Use 2003

Figure 3.5.10-15a RTR Reports Screen

RTR Report Screen	Input Action
Daily Deposit Timeliness Report	Report based upon dates, RPSID Ranges, and Site Names.

RTR Report Screen	Input Action
Deposit Activity Report	Report based upon date and Site Name Note: This report requires only a month and year as a run date.
Performance Metrics Report	Report based on Date.
Reconciliation Report	Report based on Date. Note: Option to choose Load or Deposit.
Local Report	Report based upon file name, load time, transfer time, opportunity calculation time, total time, and total number count of deposits, checks, transactions.
Remittance Register Report - Form 813	Report based on DLN.
End Point Master Listing	Report based on DLN.
Audit Log Report	Report based on User SEID, Manager, Organization Symbols, Event, Audit Status Date, Start and End Date.
RPSID Range Summary Report	Report provides information on site ranges used to process payment types.

Figure 3.5.10-15b RTR Reports

Step	Action
2	Click to select the Daily Deposit Timeliness Report.
3	Click a report date (Month, Day, Year).
4	Click the <Submit> button. Result: A Daily Deposit Timeliness Report window appears prompting you to select a RPSID Range and Site Name. Figure 3.5.10-16 Note: The Site Name reflects the site where the deposit or transaction was made.

RTR
Remittance Transaction Research

NAVIGATION: Research Admin Reports Help Logoff

Daily Deposit Timeliness Report

Directions: Please choose a RPSID range and site name to view the corresponding Daily Deposit Timeliness Report. Click 'Submit' to view the report, or 'Back' to return to the previous menu where you may choose another report type or date.

Please choose a RPSID Range and Site:

RPSID Range: All range: 1 to 999999 Site Name: Austin Service Center

Submit << Back

Home | Research | Admin | Reports | Help | Logoff

Figure 3.5.10-16 Daily Deposit Timeliness Report Window

Step	Action
5	Select a RPSID Range.
6	Select a Site Name.
7	Click the <Submit> button. Result: The Daily Deposit Timeliness Report appears. Figure 3.5.10-17
	Note: If no report is available, the following message appears: Sorry no report is available, please revise your search. Click the <Back> button and try again.

[illegible]

Figure 3.5.10-17 Daily Deposit Timeliness Report

Step	Action
8	Click the <Printer Friendly Version> button. Result: A printable version of the Daily Deposit Timeliness Report appears. Figure 3.5.10-18

[illegible]

Figure 3.5.10-18 Printable Version of the Daily Deposit Timeliness Report

Step	Action
9	Click the <Print> button/icon on the browser toolbar to print the report.
10	Click the <<BACK button to return to the Daily Deposit Timeliness Report screen.
11	Click the <Reports> button at the top of the page to return to the RTR Reports menu.

Step	Action
12	To view the report for another date, return to Step 3.

3.5.10.10.2 (01-01-2022)

Generating The Deposit Activity Report

(1) The Deposit Activity Report is a monthly report that calculates percentages of timely deposits within perfect remittances. These reports are based upon date and Site Name. This report is updated daily with each day's deposits.

- a. Since the report is based on differences between deposit date and transaction date (received date), the calculations for any given transaction date may change daily.
- b. Additional calculations are added at the bottom to show "Total Timely Deposits", "Total Untimely Deposits" and "Percent of Deposits Made Timely". The information is being monitored by the Submission Processing Monitoring section.

Note: Only User Levels 30 and 40 or administrators can access this report.

Note: This report requires only a month and year as a run date.

(2) Follow the steps below to generate the Deposit Activity Report.

Step	Action
1	Click the <Reports> button at the top of the RTR Home page.
2	Click to select the Deposit Activity Report.
3	Click a report date (Month, Day, Year).
4	Click the <Submit> button. Result: A Deposit Activity Report window appears prompting you to select a Site Name. Figure 3.5.10-19 Note: The Site Name reflects the site where the deposit or transaction was made.

RTR
Remittance
Transaction
Research

NAVIGATION
Research Admin Reports ? Help Logoff

REPORTS

Deposit Activity Report for 02-2020

Directions: Please choose a site name to view the corresponding Deposit Activity Report. Click 'Submit' to view the report, or 'Back' to return to the previous menu where you may choose another report type or date.

Please choose a Site:

Site Name: 29 - Ogden Service Center

Submit << Back

Figure 3.5.10-19 Deposit Activity Report

Step	Action
5	Select a Site Name.
6	Click the <Submit> button. Result: The Deposit Activity Report appears. Figure 3.5.10-20
	Note: If no report is available, the following message appears: Sorry no report is available, please revise your search. Click the <Back> button and try again.

RTR

Remittance Transaction Research

NAVIGATION

Research

Admin

Reports

?

Help

Logoff

REPORTS

Deposit Activity Report

ISR 1345

Transaction Date	Total W/R Received	Minus # of Remits to Perfect	Remits Subject to 90% Rule	Day of Receipts Deposits	Next Business Day Deposits	Timely Deposit %	Day 2 Deposits	3 Day and Over Deposits
1	1	0	0	0	0%	0	0	
10,299	2,656	7,643	4,794	2,772	99%	77	0	
5,921	2,049	3,872	2,237	635	74%	0	1,000	
4	4	0	0	0	0%	0	0	
2	2	0	0	0	0%	0	0	
3,357	1,651	1,706	1,474	0	86%	0	232	
406	4	402	402	0	100%	0	0	
23,103	3,863	19,240	12,767	2,807	81%	1,697	1,969	
7,088	1,276	5,812	5,766	0	99%	0	46	
21,842	601	21,241	14,852	6,389	100%	0	0	
2,538	104	2,434	2,434	0	100%	0	0	
8,914	2,236	6,678	5,278	0	79%	0	1,400	
49	49	0	0	0	0%	0	0	
27,713	5,825	21,888	13,580	3,570	78%	4,027	711	
6,977	618	6,359	5,811	537	100%	11	0	
8	7	1	0	1	100%	0	0	
6,438	1,794	4,644	3,316	1,023	93%	52	253	
Total	141,466	26,470	114,996	83,719	19,749	90%	5,882	5,646

Printer Friendly Version

<< Back

Figure 3.5.10-20 Deposit Activity Report

Step	Action
7	Click the <Printer Friendly Version> button. Result: A printable version of the Deposit Activity Report appears.

ISR 1345 - Deposit Activity Report

Deposit Activity Report								
Transaction Date	Total W/R Received	Minus # of Remits to Perfect	Remits Subject to 90% Rule	Day of Receipts Deposits	Next Business Day Deposits	Timely Deposit %	Day 2 Deposits	3 Day and Over Deposits
	4,603	1,381	3,222	2,717	470	99%	0	35
	1	1	0	0	0	0%	0	0
	10,299	2,656	7,643	4,794	2,772	99%	77	0
	5,921	2,049	3,872	2,237	635	74%	0	1,000
	4	4	0	0	0	0%	0	0
	2	2	0	0	0	0%	0	0
	3,357	1,651	1,706	1,474	0	86%	0	232
	406	4	402	402	0	100%	0	0
	23,103	3,863	19,240	12,767	2,807	81%	1,697	1,969
	7,088	1,276	5,812	5,766	0	99%	0	46
	21,842	601	21,241	14,852	6,389	100%	0	0
	2,538	104	2,434	2,434	0	100%	0	0
	8,914	2,236	6,678	5,278	0	79%	0	1,400
	49	49	0	0	0	0%	0	0
	27,713	5,825	21,888	13,580	3,570	78%	4,027	711
	6,977	618	6,359	5,811	537	100%	11	0
	8	7	1	0	1	100%	0	0
	6,438	1,794	4,644	3,316	1,023	93%	52	253
12,203	2,349	9,854	8,291	1,545	100%	18	0	
Total	141,466	26,470	114,996	83,719	19,749	90%	5,882	5,646

Limited Official Use

Figure 3.5.10-21 Printer Friendly Version of the Deposit Activity Report

Step	Action
8	Click the <Print> button/icon on the browser toolbar to print the report.
9	Click the <<BACK button to return to the Deposit Activity Report screen.
10	Click the <Reports> button at the top of the page to return to the RTR Reports menu.
11	To view the report for another date, return to Step 2.

Note: There is a 24 hour deposit standard for tax collections.

3.5.10.10.3 (01-01-2016)

Generating The Performance Metrics Report

- (1) The Performance Metrics Report is a report that allows you to view/print past Remittance Transaction Register Performance reports. The RTR system monitors accesses and performances by each level of user groups.
 - a. This report is used by HQ personnel to determine if the system meets performance requirements specified. Only User Levels 20 and 40 can access this report.
- (2) Follow the steps below to generate the Performance Metrics Report.

Step	Action
1	Click the <Reports> button at the top of the RTR Home page.
2	Click to select the Performance Metrics Report.
3	Click a report date (Month, Day, Year).
4	Click the <Submit> button. Result: A Performance Metrics Report window appears. Figure 3.5.10-22
	Note: If no report is available, the following message appears: Sorry no report is available, please revise your search. Click the <Back> button and try again.

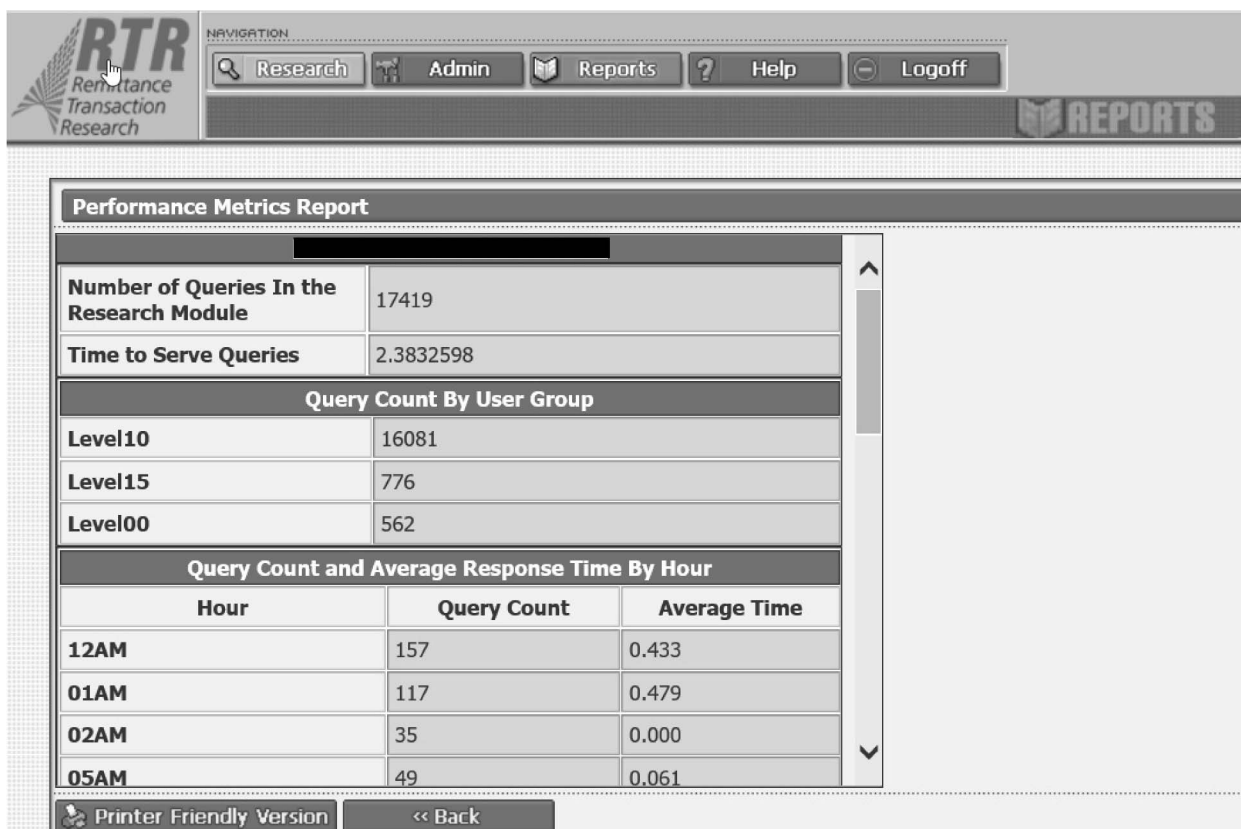


Figure 3.5.10-22 Performance Metrics Report Window

Step	Action
5	Click the <Printer Friendly Version> button. Result: A printable version of the Monthly Deposit Timeliness Report appears. Figure 3.5.10-23

Reporting Date: XXXXXXXXXX		
Number of Queries In the Research Module		17419
Time to Serve Queries		2.3832598
Query Count By User Group		
Level10		16081
Level15		776
Level00		562
Query Count and Average Response Time By Hour		
Hour	Query Count	Average Time
12AM	157	0.433
01AM	117	0.479
02AM	35	0.000
05AM	49	0.061
06AM	217	1.009
07AM	616	0.617
08AM	658	5.597
09AM	658	4.257
10AM	760	6.186
11AM	749	1.644
12PM	701	6.959
01PM	829	8.591
02PM	733	6.220
03PM	769	0.611
04PM	1175	0.226
05PM	1726	1.769
06PM	1522	0.482
07PM	1569	2.461
08PM	1123	1.232
09PM	1012	0.105
10PM	947	0.126
11PM	1297	1.404
Filter Type Count		
Image View Count		49451
Transaction Amount		908
MFT		175
Transaction Date		229
Transaction Code		116
View Split Multiples		32

Limited Official Use

Figure 3.5.10-23 Printable Version of Performance Metrics Report

Step	Action
6	Click the <Print> button/icon on the browser toolbar to print the report.
7	Click the << BACK button to the Monthly Deposit Timeliness Report screen.
8	Click the <Reports> button at the top of the page to return to the RTR Reports menu.
9	To view the report for another date, return to Step 2.

3.5.10.10.4

(01-01-2016)

Generating The Reconciliation Report

- (1) The Reconciliation Report provides information on daily Loads and Deposits. It is based on:

- a. Site
- b. Deposit Date (for Load); or Date Received (for Deposit)
- c. Date Validated
- d. Number of Transactions
- e. Number of checks
- f. Deposit Total
- g. Number of Valid Images
- h. Number of Invalid Images
- i. Total Number of Images

- (2) Follow the steps below to generate the Reconciliation Report.

Step	Action
1	Click the <Reports> button at the top of the RTR Home page.
2	Click to select the Reconciliation Report.
3	Click a report date (Month, Day, Year). Click either Load or Deposit.
4	Click the <Submit> button. Result: A Reconciliation Report window appears. Figure 3.5.10-24a
	Note: If no report is available, the following message appears: Sorry no report is available, please revise your search. Click the <BACK> button and try again.


 <div> NAVIGATION <div> Research Admin Reports Help Logoff </div> </div> <div>REPORTS</div>												
RTR Load Reconciliation Report												
Site	Deposit Date	Data Validated	# of Transactions	# of Checks	Deposit Total	Image Received	# of Valid Images	# of Invalid Images	Total # of Images	To-Run Status	XML Persisted in DR	Image Persisted in DR
Complete Loads												
		PASS	47	49	\$858,670.42		26	0	26	Pass		
		PASS	103	99	\$949,870.89		30	0	30	Pass		
		PASS	51	48	\$350,026.11		28	0	28	Pass		
		PASS	78	81	\$327,665.03		23	0	23	Pass		
		PASS	69	60	\$129,601.75		24	0	24	Pass		
		PASS	117	115	\$395,844.77		39	0	39	Pass		
07_01 - Atlanta Service Center		PASS	689	686	\$526,673.26		36	0	36	Pass		
07_01 - Atlanta Service Center		PASS	289	283	\$253,297.49		14	0	14	Pass		
08_01 - Andover Service Center		PASS	165	165	\$351,386.37		20	0	20	Pass		
<div>Printer Friendly Version</div> <div><< Back</div>												

Figure 3.5.10-24a Load Reconciliation Report

 <div> NAVIGATION <div> Research Admin Reports Help Logoff </div> </div> <div>REPORTS</div>												
RTR Deposit Reconciliation Report from												
76 - RSPCC OVDP AUSPC	No					No						
Complete Loads												
09_01 - Kansas City Service Center		PASS	13260	13178	\$45,038,281.73		750	0	750	Pass		
18_01 - Austin Service Center		PASS	2095	2082	\$5,207,174.42		137	0	137	Pass		
29_01 - Ogden Service Center		PASS	12428	12018	\$60,028,798.02		333	0	333	Pass		
		PASS	13826	14102	\$46,995,820.62		680	0	680	Pass		
		PASS	4993	5078	\$57,772,934.06		235	0	235	Pass		
		PASS	1087	1091	\$1,377,378.10		79	0	79	Pass		
		PASS	12793	13042	\$67,861,113.27		712	0	712	Pass		
		PASS	20702	21342	\$95,404,607.44		1079	0	1079	Pass		
		PASS	2467	2523	\$4,051,327.89		75	0	75	Pass		
		PASS	4453	4501	\$5,263,267.37		213	0	213	Pass		
<div>Printer Friendly Version</div> <div><< Back</div>												

Figure 3.5.10-24b Deposit Reconciliation Report

Step	Action
5	Click the <Printer Friendly Version> button. Result: A printable version of the Reconciliation Report appears.

Step	Action
6	Click the <Print> button/icon on the browser toolbar to print the report. Figure 3.5.10-25a

 <div> NAVIGATION <div> Research Admin Reports Help Logoff </div> </div> <div>REPORTS</div>												
RTR Load Reconciliation Report from [REDACTED]												
Site	Deposit Date	Data Validated	# of Transactions	# of Checks	Deposit Total	Image Received	# of Valid Images	# of Invalid Images	Total # of Images	Run-To-Run Status	XML Persisted in DR	Image Persisted in DR
Complete Loads												
00_01 - RS-PCC	[REDACTED]	PASS	47	49	\$858,670.42	[REDACTED]	26	0	26	Pass	[REDACTED]	[REDACTED]
00_03 - RS-PCC	[REDACTED]	PASS	103	99	\$949,870.89	[REDACTED]	30	0	30	Pass	[REDACTED]	[REDACTED]
00_02 - RS-PCC	[REDACTED]	PASS	51	48	\$350,026.11	[REDACTED]	28	0	28	Pass	[REDACTED]	[REDACTED]
00_03 - RS-PCC	[REDACTED]	PASS	78	81	\$327,665.03	[REDACTED]	23	0	23	Pass	[REDACTED]	[REDACTED]
00_02 - RS-PCC	[REDACTED]	PASS	69	60	\$129,601.75	[REDACTED]	24	0	24	Pass	[REDACTED]	[REDACTED]
00_04 - RS-PCC	[REDACTED]	PASS	117	115	\$395,844.77	[REDACTED]	39	0	39	Pass	[REDACTED]	[REDACTED]
<div> Printer Friendly Version << Back </div>												

Figure 3.5.10-25a Printer Friendly Version of the RTR Load Reconciliation Report

Site	Deposit Date	Data Validated	# of Transactions	# of Checks	Deposit Total	Image Received	# of Valid Images	# of Invalid Images	Total # of Images	Run-To-Run Status	XML Persisted in DR	Image Persisted in DR
Complete Loads												
00_01 - RS-PCC	[REDACTED]	PASS	47	49	\$858,670.42	[REDACTED]	26	0	26	Pass	[REDACTED]	[REDACTED]
00_03 - RS-PCC	[REDACTED]	PASS	103	99	\$949,870.89	[REDACTED]	30	0	30	Pass	[REDACTED]	[REDACTED]
00_02 - RS-PCC	[REDACTED]	PASS	51	48	\$350,026.11	[REDACTED]	28	0	28	Pass	[REDACTED]	[REDACTED]
00_03 - RS-PCC	[REDACTED]	PASS	78	81	\$327,665.03	[REDACTED]	23	0	23	Pass	[REDACTED]	[REDACTED]
00_02 - RS-PCC	[REDACTED]	PASS	69	60	\$129,601.75	[REDACTED]	24	0	24	Pass	[REDACTED]	[REDACTED]
00_04 - RS-PCC	[REDACTED]	PASS	117	115	\$395,844.77	[REDACTED]	39	0	39	Pass	[REDACTED]	[REDACTED]
07_01 - Atlanta Service Center	[REDACTED]	PASS	689	686	\$526,673.26	[REDACTED]	36	0	36	Pass	[REDACTED]	[REDACTED]
07_01 - Atlanta Service Center	[REDACTED]	PASS	289	283	\$252,297.49	[REDACTED]	14	0	14	Pass	[REDACTED]	[REDACTED]
08_01 - Andover Service Center	[REDACTED]	PASS	165	165	\$351,386.37	[REDACTED]	20	0	20	Pass	[REDACTED]	[REDACTED]
08_01 - Andover Service Center	[REDACTED]	PASS	273	277	\$485,004.63	[REDACTED]	34	0	34	Pass	[REDACTED]	[REDACTED]
09_01 - Kansas City Service Center	[REDACTED]	PASS	13260	13178	\$45,038,281.73	[REDACTED]	750	0	750	Pass	[REDACTED]	[REDACTED]
17_05 - Cincinnati Service Center	[REDACTED]	PASS	1455	1479	\$15,814,172.79	[REDACTED]	79	0	79	Pass	[REDACTED]	[REDACTED]
18_01 - Austin Service Center	[REDACTED]	PASS	2095	2082	\$5,207,174.42	[REDACTED]	137	0	137	Pass	[REDACTED]	[REDACTED]
19_01 - Brookhaven Service Center	[REDACTED]	PASS	347	342	\$590,731.49	[REDACTED]	20	0	20	Pass	[REDACTED]	[REDACTED]
19_01 - Brookhaven Service Center	[REDACTED]	PASS	446	439	\$873,046.98	[REDACTED]	27	0	27	Pass	[REDACTED]	[REDACTED]
28_01 - Philadelphia Service Center	[REDACTED]	PASS	625	609	\$966,579.58	[REDACTED]	36	0	36	Pass	[REDACTED]	[REDACTED]
28_01 - Philadelphia Service Center	[REDACTED]	PASS	367	333	\$686,110.44	[REDACTED]	23	0	23	Pass	[REDACTED]	[REDACTED]
29_01 - Ogden Service Center	[REDACTED]	PASS	12428	12018	\$60,028,796.02	[REDACTED]	333	0	333	Pass	[REDACTED]	[REDACTED]
[REDACTED]	[REDACTED]	PASS	64281	65173	\$311,809,583.80	[REDACTED]	2191	0	2191	Pass	[REDACTED]	[REDACTED]
[REDACTED]	[REDACTED]	PASS	13826	14102	\$46,995,820.62	[REDACTED]	680	0	680	Pass	[REDACTED]	[REDACTED]
[REDACTED]	[REDACTED]	PASS	4993	5078	\$37,772,934.06	[REDACTED]	235	0	235	Pass	[REDACTED]	[REDACTED]
[REDACTED]	[REDACTED]	PASS	1087	1091	\$1,377,378.10	[REDACTED]	79	0	79	Pass	[REDACTED]	[REDACTED]
[REDACTED]	[REDACTED]	PASS	17059	17336	\$109,346,549.13	[REDACTED]	966	0	966	Pass	[REDACTED]	[REDACTED]
[REDACTED]	[REDACTED]	PASS	77989	79499	\$299,623,674.19	[REDACTED]	2819	0	2819	Pass	[REDACTED]	[REDACTED]
[REDACTED]	[REDACTED]	PASS	20702	21342	\$95,404,607.44	[REDACTED]	1079	0	1079	Pass	[REDACTED]	[REDACTED]
89_01 - Fresno Service Center	[REDACTED]	PASS	2467	2523	\$4,051,327.89	[REDACTED]	75	0	75	Pass	[REDACTED]	[REDACTED]
[REDACTED]	[REDACTED]	PASS	17948	18124	\$44,621,746.13	[REDACTED]	678	0	678	Pass	[REDACTED]	[REDACTED]
[REDACTED]	[REDACTED]	PASS	4453	4501	\$5,263,267.37	[REDACTED]	213	0	213	Pass	[REDACTED]	[REDACTED]

Figure 3.5.10-25b Print of the Deposit Reconciliation Report

Step	Action
7	Click the <<BACK button to return to the Reconciliation Report screen.
8	Click the <Reports> button at the top of the page to return to the RTR Reports menu.

Step	Action
9	To view the report for another date, return to Step 2.

3.5.10.10.5
(01-01-2022)

**Generating the
Remittance Processing
System Identification
(RPSID) Range Summary
Report**

(1) The RPSID Range Summary Report provides information on site ranges used to process payment types. It is based upon:

- a. Site
- b. Range
- c. Total Transactions
- d. Total Transactions Amount
- e. Opportunity Cost

(2) Follow the steps below to generate the RPSID Range Summary Report.

STEP	ACTION
1	Click the <Reports> button at the top of the RTR Home page.
2	Select the RPSID Range Summary Report (Click Submit).
3	Select a site or multiple sites. Chose option: Add all sites, add one site, remove site, or remove all sites.
4	Select a start and end Date (Month, Day, Year).
5	Select All Opportunity cost or Zero Opportunity cost.
6	Click the <Submit> button. Result: A RPSID Range Summary Report appears.
	Note: If no report is available, the following message will appear: "No data available for the specified time period." Click the <BACK> button and try again.