



Department of the Treasury
Internal Revenue Service

Publication 503

Cat. No. 15004M

Child and Dependent Care Expenses

For use in preparing
2002 Returns



Get forms and other information faster and easier by:

Computer • www.irs.gov or **FTP** • [ftp.irs.gov](ftp://ftp.irs.gov)
FAX • 703-368-9694 (from your FAX machine)

Contents

Important Change for 2002	1
Important Changes for 2003	1
Important Reminders	2
Introduction	2
Tests To Claim the Credit	2
Qualifying Person Test	4
Keeping Up a Home Test	6
Earned Income Test	6
Work-Related Expense Test	7
Joint Return Test	9
Provider Identification Test	9
How To Figure the Credit	10
Figuring Total Work-Related Expenses	10
Earned Income Limit	11
Dollar Limit	12
Amount of Credit	13
How To Claim the Credit	14
Employment Taxes for Household Employers	14
Examples	15
How To Get Tax Help	19
Index	21

Important Change for 2002

New definition of earned income. Earned income no longer includes employee compensation that is nontaxable. See *Earned Income Test*.

Important Changes for 2003

Beginning in 2003, the following changes will be made to the child and dependent care credit.

Credit percentage. The credit can be as much as 35% (increased from 30% in 2002) of your qualified expenses.

Income that qualifies for highest percentage. The maximum adjusted gross income amount that qualifies for the highest percentage (35% in 2003) will increase to \$15,000.

Dollar limit. The dollar limit on the amount of qualifying expenses will increase to \$3,000 for one qualifying individual and \$6,000 for two or more qualifying individuals.

Earned income amount for nonworking spouse. The amount of earned income your spouse who is either a full-time student or not able to care for himself or herself is treated as having earned will increase. This amount will

increase to \$250 a month if there is one qualifying person and to \$500 a month if there are two or more qualifying persons.

Important Reminders

Taxpayer identification number needed for each qualifying person. You must include on line 2 of Form 2441, *Child and Dependent Care Expenses*, or Schedule 2 (Form 1040A), *Child and Dependent Care Expenses for Form 1040A Filers*, the name and taxpayer identification number (generally the social security number) of each qualifying person. See *Taxpayer identification number under Qualifying Person Test*, later.

You may have to pay employment taxes. If you pay someone to come to your home and care for your dependent or spouse, you may be a household employer who has to pay employment taxes. Usually, you are **not** a household employer if the person who cares for your dependent or spouse does so at his or her home or place of business. See *Employment Taxes for Household Employers*, later.

Photographs of missing children. The Internal Revenue Service is a proud partner with the National Center for Missing and Exploited Children. Photographs of missing children selected by the Center may appear in this publication on pages that would otherwise be blank. You can help bring these children home by looking at the photographs and calling **1-800-THE-LOST (1-800-843-5678)** if you recognize a child.

Introduction

This publication explains the tests you must meet to claim the credit for child and dependent care expenses. It explains how to figure and claim the credit.

You may be able to claim the credit if you pay someone to care for your dependent who is under age 13 or for your spouse or dependent who is not able to care for himself or herself. The credit can be up to 30% of your expenses. To qualify, you must pay these expenses so you can work or look for work.

This publication also discusses some of the employment tax rules for household employers.

Dependent care benefits. If you received any dependent care benefits from your employer during the year, you may be able to exclude from your income all or part of them. You must complete Part III of Form 2441 or Schedule 2 (Form 1040A) before you can figure the amount of your credit. See *Employer-Provided Dependent Care Benefits under How To Figure the Credit*, later.

Comments and suggestions. We welcome your comments about this publication and your suggestions for future editions.

You can e-mail us while visiting our web site at **www.irs.gov**.

You can write to us at the following address:

Internal Revenue Service
Tax Forms and Publications
W:CAR:MP:FP
1111 Constitution Ave. NW
Washington, DC 20224

We respond to many letters by telephone. Therefore, it would be helpful if you would include your daytime phone number, including the area code, in your correspondence.

Useful Items

You may want to see:

Publication

- 501** Exemptions, Standard Deduction, and Filing Information
- 926** Household Employer's Tax Guide

Form (and Instructions)

- 2441** Child and Dependent Care Expenses
- Schedule 2 (Form 1040A)** Child and Dependent Care Expenses for Form 1040A Filers
- Schedule H (Form 1040)** Household Employment Taxes
- W-10** Dependent Care Provider's Identification and Certification

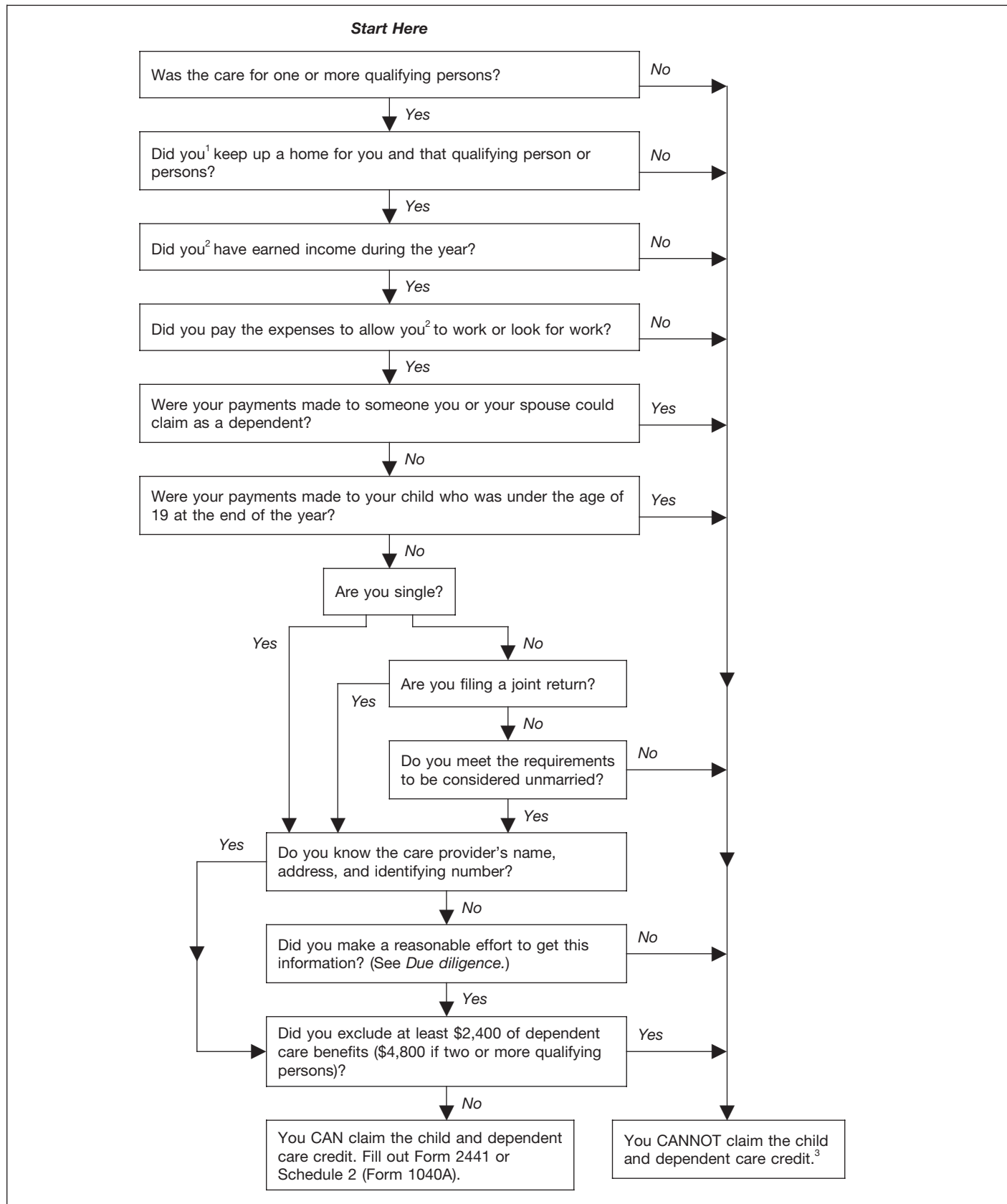
See *How To Get Tax Help*, near the end of this publication, for information about getting these publications and forms.

Tests To Claim the Credit

To be able to claim the credit for child and dependent care expenses, you must file Form 1040 or Form 1040A, not Form 1040EZ, and meet **all** the following tests.

- 1) The care must be for one or more qualifying persons who are identified on the form you use to claim the credit. (See *Qualifying Person Test*.)
- 2) You (and your spouse if you are married) must keep up a home that you live in with the qualifying person or persons. (See *Keeping Up a Home Test*, later.)
- 3) You (and your spouse if you are married) must have earned income during the year. (However, see *Rule for student-spouse or spouse not able to care for self under Earned Income Test*, later.)

Figure A. **Can You Claim the Credit?**



¹ This includes your spouse if you were married.

² This also applies to your spouse, unless your spouse was disabled or a full-time student.

³ If you had expenses that met the requirements for 2001, except that you did not pay them until 2002, you may be able to claim those expenses in 2002. See *Expenses not paid until the following year under How To Figure the Credit.*

- 4) You must pay child and dependent care expenses so you (and your spouse if you are married) can work or look for work. (See *Work-Related Expense Test*, later.)
- 5) You must make payments for child and dependent care to someone you (or your spouse) cannot claim as a dependent. If you make payments to your child, he or she cannot be your dependent and must be age 19 or older by the end of the year. (See *Payments to Relatives* under *Work-Related Expense Test*, later.)
- 6) Your filing status must be single, head of household, qualifying widow(er) with dependent child, or married filing jointly. You must file a joint return if you are married, unless an exception applies to you. See *Joint Return Test*, later.
- 7) You must identify the care provider on your tax return. (See *Provider Identification Test*, later.)
- 8) If you exclude dependent care benefits provided by your employer, the amount you exclude must be less than the dollar limit for qualifying expenses (generally, \$2,400 if one qualifying person was cared for, or \$4,800 if two or more qualifying persons were cared for). (See *Reduced Dollar Limit* under *How To Figure the Credit*, later.)

These tests are presented in *Figure A* and are also explained in detail in this publication.

Qualifying Person Test

Your child and dependent care expenses must be for the care of one or more qualifying persons.

A qualifying person is:

- 1) Your dependent who was under age 13 when the care was provided and for whom you can claim an exemption,
- 2) Your spouse who was physically or mentally not able to care for himself or herself, or
- 3) Your dependent who was physically or mentally not able to care for himself or herself and for whom you can claim an exemption (or could claim an exemption except the person had \$3,000 or more of gross income).

If you are divorced or separated, see *Child of Divorced or Separated Parents*, later, to determine which parent may treat the child as a qualifying person.

For information on claiming an exemption, see Publication 501.

Physically or mentally not able to care for oneself. Persons who cannot dress, clean, or feed themselves because of physical or mental problems are considered not able to care for themselves. Also, persons who must have constant attention to prevent them from injuring themselves or others are considered not able to care for themselves.

Person qualifying for part of year. You determine a person's qualifying status each day. For example, if the person for whom you pay child and dependent care expenses no longer qualifies on September 16, count only those expenses through September 15. Also see *Dollar Limit* under *How To Figure the Credit*, later.

Taxpayer identification number. You must include on your return the name and taxpayer identification number (generally the social security number) of the qualifying person(s). If the correct information is not shown, the credit may be reduced or disallowed.

Individual taxpayer identification number (ITIN) for aliens. If your qualifying person is a nonresident or resident alien who does not have and cannot get a social security number (SSN), use that person's ITIN. The ITIN is entered wherever an SSN is requested on a tax return. If the alien does not have an ITIN, he or she must apply for one on Form W-7, *Application for IRS Individual Taxpayer Identification Number*.

An ITIN is for tax use only. It does not entitle the holder to social security benefits or change the holder's employment or immigration status under U.S. law.

Adoption taxpayer identification number (ATIN). If your qualifying person is a child who was placed in your home for adoption and for whom you do not have an SSN, you must get an ATIN for the child. File Form W-7A, *Application for Taxpayer Identification Number for Pending U.S. Adoptions*.

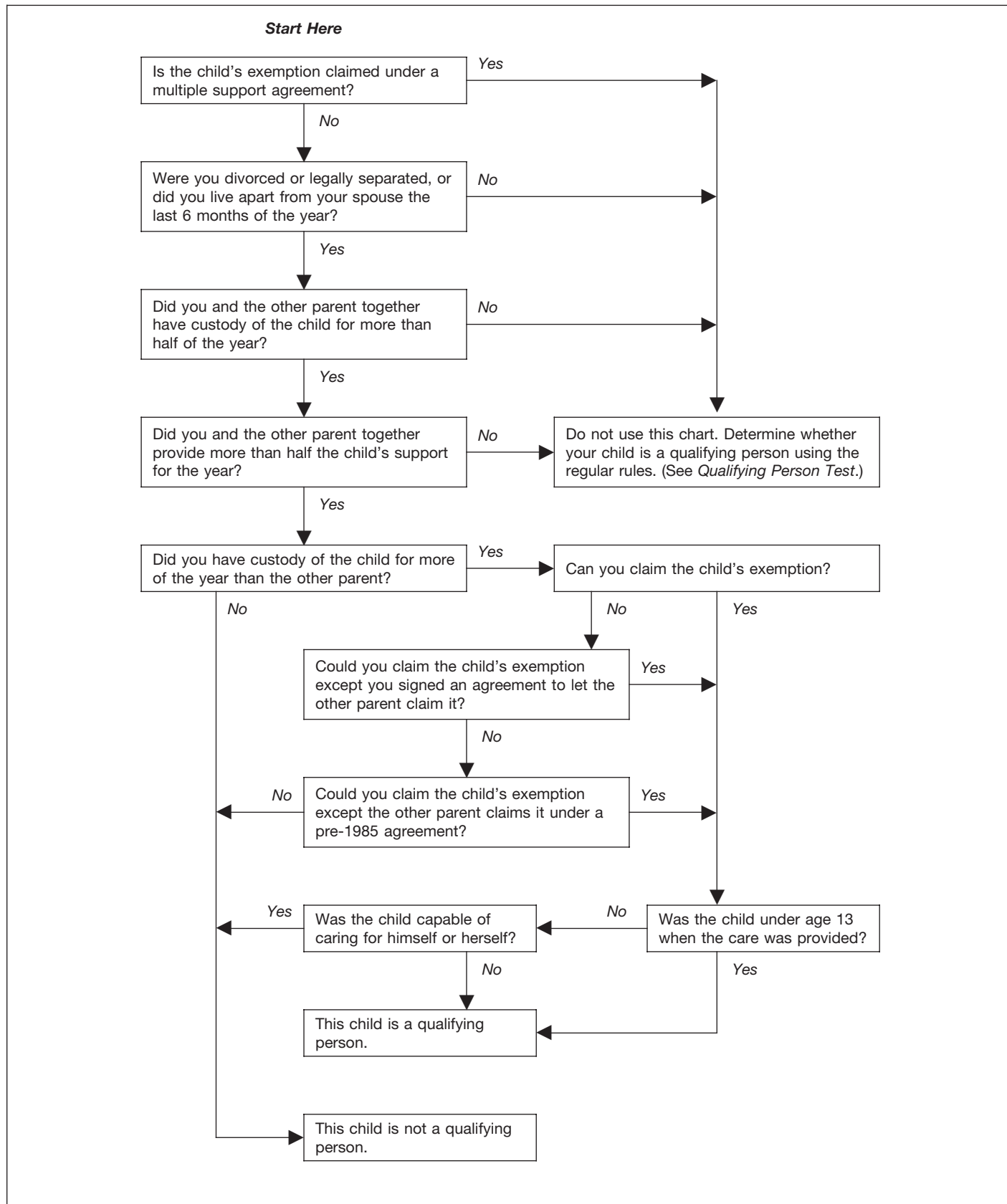
Child of Divorced or Separated Parents

To be a qualifying person, your child usually must be your dependent for whom you can claim an exemption. But an exception may apply if you are divorced or separated. Under the exception, if you are the custodial parent, you can treat your child as a qualifying person even if you cannot claim the child's exemption. If you are the noncustodial parent, you cannot treat your child as a qualifying person even if you can claim the child's exemption.

This exception applies if **all** of the following are true.

- 1) One or both parents had custody of the child for more than half of the year.
- 2) One or both parents provided more than half of the child's support for the year.
- 3) Either:
 - a) The custodial parent signed **Form 8332, Release of Claim to Exemption for Child of Divorced or Separated Parents**, or a similar statement, agreeing not to claim the child's exemption for the year, or
 - b) The noncustodial parent provided at least \$600 for the child's support and can claim the child's exemption under a pre-1985 decree of divorce or separate maintenance, or written agreement.

Figure B. Is a Child of Divorced or Separated Parents a Qualifying Person?



For purposes of 3(a), a similar statement includes a divorce decree or separation agreement that went into effect after 1984 that allows the noncustodial parent to claim the child's exemption without any conditions, such as payment of support.

You can use *Figure B* to see whether this exception applies to you. If it applies, only the custodial parent can treat the child as a qualifying person. If the exception does not apply, follow the regular rules for a qualifying person under *Qualifying Person Test*, earlier.

Example. You are divorced and have custody of your 8-year-old child. You sign Form 8332 to allow your ex-spouse to claim the exemption. You pay child care expenses so you can work. Your child is a qualifying person and you, the custodial parent, can claim the credit for those expenses, even though your ex-spouse claims an exemption for the child.

Custodial parent. You are the custodial parent if, during the year, you have custody of your child longer than your child's other parent has custody.

Divorced or separated. For purposes of determining whether your child is a qualifying person, you are considered divorced or separated if **either** of the following applies.

- 1) You are divorced or separated under a decree of divorce or separate maintenance or a written separation agreement.
- 2) You lived apart from your spouse for all of the last 6 months of the year.

Keeping Up a Home Test

To claim the credit, you must keep up a home. You and one or more qualifying persons must live in the home.

You are keeping up a home if you (and your spouse if you are married) pay more than half the cost of running it for the year. If you live in your home with a qualifying person for less than a full year, see *Cost determined monthly*, later.

Home. The home you keep must be the main home for both you and the qualifying person. Your home can be the main home even if the qualifying person does not live there all year because of his or her:

- 1) Birth,
- 2) Death, or
- 3) Temporary absence due to:
 - a) Sickness,
 - b) School,
 - c) Business,
 - d) Vacation,
 - e) Military service, or
 - f) Custody agreement.

Costs of keeping up a home. The costs of keeping up a home normally include property taxes, **mortgage interest**, rent, utility charges, home repairs, insurance on the home, and food eaten at home.

Costs not included. The costs of keeping up a home do not include payments for clothing, education, medical treatment, vacations, life insurance, transportation, or **mortgage principal**.

They also do not include the purchase, permanent improvement, or replacement of property. For example, you cannot include the cost of replacing a water heater. However, you can include the cost of repairing a water heater.

Public assistance benefits. Payments you receive from a state that you use to keep up your home are funds provided by the state, not by you. You must provide more than half the cost of keeping up your home **from your own funds** to claim the credit for child and dependent care expenses.

Families living together. If you and your family share living space with another family, your family and the other family are treated as separate households. (This rule applies only for purposes of the credit for child and dependent care expenses.) If you provide more than half the cost of running your household, you are keeping up a home.

Cost determined monthly. If a qualified person lived with you for less than a full year, figure the cost of keeping up your home for that period. To do this, divide your cost for the year by 12 and multiply the result by the number of months the person lived with you. Count any partial month as a full month.

Example. Joe lives in his home all year, but his son, who is a qualifying person, lives in it only from June 20 to December 31. The cost of keeping up his home for the full year is \$6,600. To meet the keeping up a home test, Joe must pay more than half the cost of keeping up the home from June 1 to December 31. He figures half the cost as follows.

Cost of Keeping Up Joe's Home That He Must Pay

1) Cost of keeping up the home for the full year	\$ 6,600
2) Divided by the number of months in a year	<u>÷ 12</u>
3) Monthly cost of keeping up the home	\$ 550
4) Multiplied by number of months the qualifying person lived in the home	<u>× 7</u>
5) Cost of keeping up the home while the qualifying person lived there	\$ 3,850
6) Multiplied by one-half	<u>× .50</u>
7) Half the cost of keeping up the home while the qualifying person lived there	<u>\$ 1,925</u>

To meet the keeping up a home test, Joe must pay more than \$1,925 to keep up his home from June 1 to December 31.

Earned Income Test

To claim the credit, you (and your spouse if you are married) must have earned income during the year.

Earned income. Earned income includes wages, salaries, tips, other taxable employee compensation, and net

earnings from self-employment. A net loss from self-employment reduces earned income. Earned income also includes strike benefits and any disability pay you report as wages.

Nontaxable employee compensation not included.

When figuring your earned income for the child and dependent care credit, do not count nontaxable employee compensation such as meals and lodging furnished for the convenience of the employer, voluntary salary deferrals, military basic quarters and subsistence allowances and in-kind quarters and subsistence, and military pay earned in a combat zone.

Members of certain religious faiths opposed to social security. This section is for persons who are members of certain religious faiths that are opposed to participation in Social Security Act programs and have an IRS-approved form that exempts certain income from social security and Medicare taxes. These forms are:

- Form 4361, *Application for Exemption From Self-Employment Tax for Use by Ministers, Members of Religious Orders and Christian Science Practitioners*,
- Form 4029, *Application for Exemption From Social Security and Medicare Taxes and Waiver of Benefits*, for use by members of recognized religious groups.

Each form is discussed in this section in terms of what is or is not earned income for purposes of the child and dependent care credit. For information on the use of these forms, see Publication 517, *Social Security and Other Information for Members of the Clergy and Religious Workers*.

Form 4361. Whether or not you have an approved Form 4361, amounts you received for performing ministerial duties **as an employee** are earned income. This includes wages, salaries, tips, and other employee compensation (but does not include any employee compensation that is nontaxable, such as a housing allowance).

However, amounts you received for ministerial duties, but **not as an employee**, are not net earnings from self-employment for purposes of the child and dependent care credit. Examples include fees for performing marriages and honoraria for delivering speeches. Any income or loss from these activities is not taken into account in figuring earned income.

Any amount you received for work that is not related to your ministerial duties is earned income.

Form 4029. Whether or not you have an approved Form 4029, all wages, salaries, tips, and other **employee compensation** are earned income. However, any employee compensation that is nontaxable is not considered earned income.

In addition, amounts you received as a **self-employed** individual are not net earnings from self-employment for purposes of the child and dependent care credit, and are not taken into account in figuring earned income.

What is not earned income? Earned income does not include pensions or annuities, social security payments, workers' compensation, interest, dividends, or unemployment compensation. It also does not include scholarship or fellowship grants, except amounts paid to you (and reported on Form W-2) for teaching, research, or other services.

Rule for student-spouse or spouse not able to care for self. Your spouse is treated as having earned income for any month that he or she is:

- 1) A full-time student, or
- 2) Physically or mentally not able to care for himself or herself.

Figure the earned income of the nonworking spouse, described under (1) or (2) above, as shown under *Earned Income Limit* under *How To Figure the Credit*, later.

This rule applies to only one spouse for any one month. If, in the same month, both you and your spouse do not work and are either full-time students or physically or mentally not able to care for yourselves, only one of you can be treated as having earned income in that month.

Full-time student. You are a full-time student if you are enrolled at and attend a school for the number of hours or classes that the school considers full time. You must have been a student for some part of each of 5 calendar months during the year. (The months need not be consecutive.) If you attend school only at night, you are not a full-time student. However, as part of your full-time course of study, you may attend some night classes.

School. The term "school" includes elementary schools, junior and senior high schools, colleges, universities, and technical, trade, and mechanical schools. It does not include on-the-job training courses, correspondence schools, and night schools.

Work-Related Expense Test

Child and dependent care expenses must be work related to qualify for the credit. Expenses are considered work related only if both of the following are true.

- They allow you (and your spouse if you are married) to work or look for work.
- They are for a qualifying person's care.

Working or Looking for Work

To be work related, your expenses must allow you to work or look for work. If you are married, generally both you and your spouse must work or look for work. Your spouse is treated as working during any month he or she is a full-time student or is physically or mentally not able to care for himself or herself.

Your work can be for others or in your own business or partnership. It can be either full time or part time.

Work also includes actively looking for work. However, if you do not find a job and have no earned income for the

year, you cannot take this credit. See *Earned Income Test*, earlier.

Whether your expenses allow you to work or look for work depends on the facts. For example, the cost of a baby sitter while you and your spouse go out to eat is not normally a work-related expense.

An expense is not considered work related merely because you had it while you were working. The purpose of the expense must be to enable you to work.

Volunteer work. For this purpose, you are not considered to be working if you do unpaid volunteer work or volunteer work for a nominal salary.

Work for part of year. If you work or actively look for work during only part of the period covered by the expenses, then you must figure your expenses for each day. For example, if you work all year and pay care expenses of \$200 a month (\$2,400 for the year), all the expenses are work related. However, if you work or look for work for only 2 months and 15 days during the year and pay expenses of \$200 a month, your work-related expenses are limited to \$500 (2½ months × \$200).

Payments while you are out sick. Do not count as work-related expenses amounts you pay for child and dependent care while you are off work because of illness. These amounts are not paid to allow you to work. This applies even if you get sick pay and are still considered an employee.

Care of a Qualifying Person

To be work related, your expenses must be to provide care for a qualifying person. You do not have to choose the least expensive way of providing the care.

Expenses are for the care of a qualifying person only if their main purpose is the person's well-being and protection.

Expenses for **household services** qualify if part of the services is for the care of qualifying persons. See *Household Services*, later.

Expenses not for care. Expenses for care do not include amounts you pay for food, clothing, education, and entertainment. However, you can include small amounts paid for these items if they are incident to and cannot be separated from the cost of caring for the qualifying person. Otherwise, see the discussion of *Expenses partly work related*, later.

Education. Expenses to attend first grade or a higher grade are not expenses for care. Do not use these expenses to figure your credit.

Example 1. You take your 3-year-old child to a nursery school that provides lunch and a few educational activities as part of its preschool child-care service. You can count the total cost when you figure the credit.

Example 2. You place your 10-year-old child in a boarding school so you can work full time. Only the part of the boarding school expense that is for the care of your child is

a work-related expense. You can count that part of the expense in figuring your credit if it can be separated from the cost of education. You cannot count any part of the amount you pay the school for your child's education.

Care outside your home. You can count the cost of care provided outside your home if the care is for your dependent under age 13, or any other qualifying person who regularly spends at least 8 hours each day in your home.

Dependent care center. You can count care provided outside your home by a dependent care center only if the center complies with all state and local regulations that apply to these centers.

A dependent care center is a place that provides care for more than six persons (other than persons who live there) and receives a fee, payment, or grant for providing services for any of those persons, even if the center is not run for profit.

Camp. The cost of sending your child to an overnight camp is **not** considered a work-related expense.

Transportation. The cost of getting a qualifying person from your home to the care location and back, or from the care location to school and back, is **not** considered a work-related expense. This includes the costs of bus, subway, taxi, or private car. Also, if you pay the transportation cost for the care provider to come to your home, you cannot count this cost as a work-related expense.

Household Services

Expenses you pay for household services meet the work-related expense test if they are at least partly for the well-being and protection of a qualifying person.

Definition. Household services are ordinary and usual services done in and around your home that are necessary to run your home. They include the services of a housekeeper, maid, or cook. However, they do not include the services of a chauffeur, bartender, or gardener.

Housekeeper. In this publication, the term housekeeper refers to any household employee whose services include the care of a qualifying person.

Expenses partly work related. If part of an expense is work related (for either household services or the care of a qualifying person) and part is for other purposes, you have to divide the expense. To figure your credit, count only the part that is work related. However, you do not have to divide the expense if only a small part is for other purposes.

Example. You pay a housekeeper to care for your 9-year-old and 15-year-old children so you can work. The housekeeper spends most of the time doing normal household work and spends 30 minutes a day driving you to and from work. You do not have to divide the expenses. You can treat the entire expense of the housekeeper as work related because the time spent driving is minimal. Nor do you have to divide the expenses between the two children, even though the expenses are partly for the 15-year-old child who is not a qualifying person, because the expense

is also partly for the care of your 9-year-old child, who is a qualifying person. However, the dollar limit (discussed later) is based on one qualifying person, not two.

Meals and lodging provided for housekeeper. If you have expenses for meals that your housekeeper eats in your home because of his or her employment, count these as work-related expenses. If you have extra expenses for providing lodging in your home to the housekeeper, count these as work-related expenses also.

Example. To provide lodging to the housekeeper, you move to an apartment with an extra bedroom. You can count the extra rent and utility expenses for the housekeeper's bedroom as work related. However, if your housekeeper moves into an existing bedroom in your home, you can count only the extra utility expenses as work related.

Taxes paid on wages. The taxes you pay on wages for qualifying child and dependent care services are work-related expenses. For more information on a household employer's tax responsibilities, see *Employment Taxes for Household Employers*, later.

Payments to Relatives

You can count work-related payments you make to relatives who are not your dependents, even if they live in your home. However, do not count any amounts you pay to:

- 1) A dependent for whom you (or your spouse if you are married) can claim an exemption, or
- 2) Your child who is under age 19 at the end of the year, even if he or she is not your dependent.

Joint Return Test

Generally, married couples must file a joint return to take the credit. However, if you are legally separated or living apart from your spouse, you may be able to file a separate return and still take the credit.

Legally separated. You are not considered married if you are legally separated from your spouse under a decree of divorce or separate maintenance. You are eligible to take the credit on a separate return.

Married and living apart. You are not considered married and are eligible to take the credit if **all** the following apply.

- 1) You file a separate return.
- 2) Your home is the home of a qualifying person for more than half the year.
- 3) You pay more than half the cost of keeping up your home for the year.
- 4) Your spouse does not live in your home for the last 6 months of the year.

Death of spouse. If your spouse died during the year and you do not remarry before the end of the year, you generally must file a joint return to take the credit. If you do remarry before the end of the year, the credit can be claimed on your deceased spouse's separate return.

Provider Identification Test

You must identify all persons or organizations that provide care for your child or dependent. Use Part I of Form 2441 or Schedule 2 (Form 1040A) to show the information.

Information needed. To identify the care provider, you must give the provider's:

- 1) Name,
- 2) Address, and
- 3) Taxpayer identification number.

If the care provider is an individual, the taxpayer identification number is his or her social security number or individual taxpayer identification number. If the care provider is an organization, then it is the employer identification number (EIN).

You do not have to show the taxpayer identification number if the care provider is one of certain tax-exempt organizations (such as a church or school). In this case, write "Tax-Exempt" in the space where the tax form calls for the number.

If you cannot provide all of the information or the information is incorrect, you must be able to show that you used due diligence (discussed later) in trying to furnish the necessary information.

Getting the information. You can use **Form W-10, Dependent Care Provider's Identification and Certification**, to request the required information from the care provider. If you do not use Form W-10, you can get the information from:

- 1) A copy of the provider's social security card,
- 2) A copy of the provider's driver's license (in a state where the license includes the social security number),
- 3) A copy of the provider's completed Form W-4, *Employee's Withholding Allowance Certificate*, if he or she is your household employee,
- 4) A copy of the statement furnished by your employer if the provider is your employer's dependent care plan, or
- 5) A letter or invoice from the provider if it shows the necessary information.



You should keep this information with your tax records. Do not send Form W-10 (or other document containing this information) to the Internal Revenue Service.

Due diligence. If the care provider information you give is incorrect or incomplete, your credit may not be allowed.

However, if you can show that you used due diligence in trying to supply the information, you can still claim the credit.

You can show due diligence by getting and keeping the provider's completed Form W-10 or one of the other sources of information listed earlier. Care providers can be penalized if they do not provide this information to you or if they provide incorrect information.

Provider refusal. If the provider refuses to give you the identifying information, you should report whatever information you have (such as the name and address) on the form you use to claim the credit. Enter "See Page 2" in the columns calling for the information you do not have. On the bottom of page 2, explain that you requested the information from the care provider, but the provider did not give you the information. This statement will show that you used due diligence in trying to furnish the necessary information.

How To Figure the Credit

Your credit is a percentage of your work-related expenses. Your expenses are subject to the earned income limit and the dollar limit. The percentage is based on your adjusted gross income.

Figuring Total Work-Related Expenses

To figure the credit for 2002 work-related expenses, count only those you paid by December 31, 2002.

Expenses prepaid in an earlier year. If you pay for services before they are provided, you can count the prepaid expenses only in the year the care is received. Claim the expenses for the later year as if they were actually paid in that later year.

Expenses not paid until the following year. Do *not* count 2001 expenses that you paid in 2002 as work-related expenses for 2002. You may be able to claim an additional credit for them on your 2002 return, but you must figure it separately. See *Payments for previous year's expenses under Amount of Credit*, later.



If you had expenses in 2002 that you did not pay until 2003, you cannot count them when figuring your 2002 credit. You may be able to claim a credit for them on your 2003 return.

Expenses reimbursed. If a state social services agency pays you a nontaxable amount to reimburse you for some of your child and dependent care expenses, you cannot count the expenses that are reimbursed as work-related expenses.

Example. You paid work-related expenses of \$3,000. You are reimbursed \$2,000 by a state social services agency. You can use only \$1,000 to figure your credit.

Medical expenses. Some expenses for the care of qualifying persons who are not able to care for themselves may

qualify as work-related expenses and also as medical expenses. You can use them either way, but you cannot use the same expenses to claim both a credit and a medical expense deduction.

If you use these expenses to figure the credit and they are more than the earned income limit or the dollar limit, discussed later, you can add the excess to your medical expenses. However, if you use your total expenses to figure your medical expense deduction, you cannot use any part of them to figure your credit. For information on medical expenses, see Publication 502, *Medical and Dental Expenses*.



Amounts excluded from your income under your employer's dependent care benefits plan cannot be used to claim a medical expense deduction.

Employer-Provided Dependent Care Benefits

Dependent care benefits include:

- 1) Amounts your employer pays directly to either you or your care provider for the care of your qualifying person while you work, and
- 2) The fair market value of care in a day-care facility provided or sponsored by your employer.

Your salary may have been reduced to pay for these benefits. If you received benefits, they should be shown on your Form W-2, *Wage and Tax Statement*. See *Statement for employee*, later.

Exclusion. If your employer provides dependent care benefits under a qualified plan, you may be able to exclude these benefits from your income. Your employer can tell you whether your benefit plan qualifies. If it does, you must complete Part III of either Form 2441 or Schedule 2 (Form 1040A) to claim the exclusion even if you cannot take the credit. You cannot use Form 1040EZ.

The amount you can exclude is limited to the smallest of:

- 1) The total amount of dependent care benefits you received during the year,
- 2) The total amount of qualified expenses you incurred during the year,
- 3) Your earned income,
- 4) Your spouse's earned income, or
- 5) \$5,000 (\$2,500 if married filing separately).

Statement for employee. Your employer must give you a **Form W-2** (or similar statement), showing in box 10 the total amount of dependent care benefits provided to you during the year under a qualified plan. Your employer will also include any dependent care benefits over \$5,000 in your wages shown in box 1 of your Form W-2.

Forfeitures. Forfeitures are amounts credited to your dependent care benefit account (flexible spending ac-

count) and included in the amount shown in box 10 of your Form W-2, but not received because you did not incur the expense. When figuring your exclusion, subtract any forfeitures from the total dependent care benefits reported by your employer. To do this, enter the forfeited amount on line 13 of Form 2441 or Schedule 2 (Form 1040A).



Forfeitures do not include amounts that you expect to receive in the future.

Effect of exclusion. If you exclude dependent care benefits from your income, the amount of the excluded benefits:

- 1) Is not included in your work-related expenses, and
- 2) Reduces the dollar limit, discussed later.

Earned Income Limit

The amount of work-related expenses you use to figure your credit cannot be more than:

- 1) Your earned income for the year, if you are **single** at the end of the year, or
- 2) The smaller of your or your spouse's earned income for the year, if you are **married** at the end of the year.

Earned income is defined under *Earned Income Test*, earlier.



For purposes of item (2), use your spouse's earned income for the entire year, even if you were married for only part of the year.

Example. You remarried on December 3. Your earned income for the year was \$18,000. Your new spouse's earned income for the year was \$2,000. You paid work-related expenses of \$3,000 for the care of your 5-year-old child and qualified to claim the credit. The amount of expenses you use to figure your credit cannot be more than \$2,000 (the smaller of your earned income or that of your spouse).

Separated spouse. If you are legally separated or married and living apart from your spouse (as described under *Joint Return Test*, earlier), you are not considered married for purposes of the earned income limit. Use only your income in figuring the earned income limit.

Surviving spouse. If your spouse died during the year and you file a joint return as a surviving spouse, you are not considered married for purposes of the earned income limit. Use only your income in figuring the earned income limit.

Community property laws. You should disregard community property laws when you figure earned income for this credit.

Self-employment earnings. If you are self-employed, include your net earnings in earned income. For purposes of the child and dependent care credit, net earnings from

self-employment generally means the amount from line 3 of Schedule SE (either Section A or Section B) **minus** any deduction for self-employment tax on line 29 of Form 1040. Include your self-employment earnings in earned income, even if they are less than \$400 and you did not file Schedule SE.

Statutory employee. If you filed Schedule C or C-EZ to report income as a statutory employee, also include as earned income the amount from line 1 of that Schedule C or C-EZ.

Net loss. You must reduce your earned income by any net loss from self-employment.

Optional method if earnings are low or a net loss. If your net earnings from self-employment are low or you have a net loss, you may be able to figure your net earnings by using an optional method instead of the regular method. Get Publication 533, *Self-Employment Tax*, for details. If you use an optional method to figure net earnings for self-employment tax purposes, include those net earnings in your earned income for this credit. In this case, subtract any deduction you claimed on Form 1040, line 29, from the total of the amounts on Schedule SE, Section B, lines 3 and 4b, to figure your net earnings.

Student-spouse or spouse not able to care for self. Your spouse who is either a full-time student or not able to care for himself or herself is treated as having earned income. His or her earned income for each month is considered to be at least \$200 if there is one qualifying person in your home, or at least \$400 if there are two or more.

Spouse works. If your spouse works during that month, use the higher of \$200 (or \$400) or his or her actual earned income for that month.

Spouse qualifies for part of month. If your spouse is a full-time student or not able to care for himself or herself for only part of a month, the full \$200 (or \$400) still applies for that month.

Both spouses qualify. If, in the same month, both you and your spouse are either full-time students or not able to care for yourselves, only one spouse can be considered to have this earned income of \$200 (or \$400) for that month.

Example. Jim works and keeps up a home for himself and his wife Sharon. Because of an accident, Sharon is not able to care for herself for 11 months during the tax year.

During the 11 months, Jim pays \$2,750 of work-related expenses for Sharon's care. These expenses also qualify as medical expenses. Their adjusted gross income is \$29,000 and the entire amount is Jim's earned income.

Jim and Sharon's earned income limit is the smallest of the following amounts.

Jim and Sharon's Earned Income Limit

1) Work-related expenses Jim paid	\$ 2,750
2) Jim's earned income	\$ 29,000
3) Income considered earned by Sharon (11 × \$200)	\$ 2,200

Jim and Sharon can use \$2,200 to figure the credit and treat the balance of \$550 (\$2,750 – \$2,200) as a medical

Worksheet 1. Worksheet for 2001 Expenses Paid in 2002

(Note: Use this worksheet to figure the credit you may claim for 2001 expenses paid in 2002.)



1. Enter your 2001 qualified expenses paid in 2001	1. _____
2. Enter your 2001 qualified expenses paid in 2002	2. _____
3. Add the amounts on lines 1 and 2	3. _____
4. Enter \$2,400 if care was for one qualifying person (\$4,800 if for two or more)	4. _____
5. Enter any dependent care benefits received for 2001 and excluded from your income (from line 18 of 2001 Form 2441 or Schedule 2 (Form 1040A))	5. _____
6. Subtract amount on line 5 from amount on line 4 and enter the result	6. _____
7. Compare your earned income for 2001 and your spouse's earned income for 2001 and enter the smaller amount	7. _____
8. Compare the amounts on lines 3, 6, and 7 and enter the smallest amount	8. _____
9. Enter the amount on which you figured the credit for 2001 (from line 6 of 2001 Form 2441 or Schedule 2 (Form 1040A))	9. _____
10. Subtract amount on line 9 from amount on line 8 and enter the result. If zero or less, stop here. You cannot increase your credit by any previous year's expenses	10. _____
11. Enter your 2001 adjusted gross income (from line 33 of your 2001 Form 1040 or line 19 of your 2001 Form 1040A)	11. _____
12. Find your 2001 adjusted gross income in the table of percentages (shown earlier) and enter the corresponding decimal amount here	12. _____
13. Multiply line 10 by line 12. Add this amount to your 2002 credit and enter the total on line 9 of your 2002 Form 2441 or Schedule 2 (Form 1040A). Write "CPYE," the amount of this credit for a prior year's expenses, and the name and taxpayer identification number of the person for whom you paid the prior year's expenses on the dotted line next to line 9 of Form 2441 or in the space to the left of line 9 on Schedule 2 (Form 1040A)	13. _____

expense. However, if they use the \$2,750 first as a medical expense, they cannot use any part of that amount to figure the credit.

Dollar Limit

There is a dollar limit on the amount of your work-related expenses you can use to figure the credit. This limit is \$2,400 for one qualifying person, or \$4,800 for two or more qualifying persons.

TIP *If you paid work-related expenses for the care of two or more qualifying persons, the \$4,800 limit does not need to be divided equally among them. For example, if your work-related expenses for the care of one qualifying person are \$2,000 and your work-related expenses for another qualifying person are \$2,800, you can use the total, \$4,800, when figuring the credit.*

Yearly limit. The dollar limit is a yearly limit. The amount of the dollar limit remains the same no matter how long, during the year, you have a qualifying person in your household. Use the \$2,400 limit if you paid work-related expenses for the care of one qualifying person at any time during the year. Use \$4,800 if you paid work-related expenses for the care of more than one qualifying person at any time during the year.

Example. In July of this year, to permit your spouse to begin a new job, you enrolled your 3-year-old daughter in a nursery school that provides preschool child care. You paid \$300 per month for the child care. You can use the full \$1,800 you paid ($\300×6 months) as qualified expenses since it is not more than the \$2,400 yearly limit.

Reduced Dollar Limit

If you received **dependent care benefits** from your employer that you exclude from your income, you must subtract that amount from the dollar limit that applies to you. Your reduced dollar limit is figured on lines 22 through 26 of Form 2441 or Schedule 2 (Form 1040A). See *Employer-Provided Dependent Care Benefits*, earlier, for information on excluding these benefits.

Example. George is a widower with one child and earns \$24,000 a year. He pays work-related expenses of \$1,900 for the care of his 4-year-old child and qualifies to claim the credit for child and dependent care expenses. His employer pays an additional \$1,000 under a qualified dependent care benefit plan. This \$1,000 is excluded from George's income.

Although the dollar limit for his work-related expenses is \$2,400 (one qualifying person), George figures his credit

on only \$1,400 of the \$1,900 work-related expenses he paid. This is because his dollar limit is reduced as shown next.

George's Reduced Dollar Limit

- 1) Maximum allowable expenses for one qualifying person \$2,400
- 2) **Minus:** Dependent care benefits George excludes from income -1,000
- 3) Reduced dollar limit on expenses George can use for the credit \$1,400

12,000	14,000	28%
14,000	16,000	27%
16,000	18,000	26%
18,000	20,000	25%
20,000	22,000	24%
22,000	24,000	23%
24,000	26,000	22%
26,000	28,000	21%
28,000	No limit	20%

Amount of Credit

To determine the amount of your credit, multiply your work-related expenses (after applying the earned income and dollar limits) by a percentage. This percentage depends on your adjusted gross income shown on line 36 of Form 1040 or line 22 of Form 1040A. The following table shows the percentage to use based on adjusted gross income.

IF your adjusted gross income is:		THEN the percentage is:
Over	But not over	
\$ 0	\$10,000	30%
10,000	12,000	29%

Payments for previous year's expenses. If you had work-related expenses in 2001 that you paid in 2002, you may be able to increase the credit on your 2002 return. Attach a statement to your form showing how you figured the additional amount from 2001. Then write "CPYE" and the amount of the credit on the dotted line next to line 9 on Form 2441 or in the space to the left of line 9 on Schedule 2 (Form 1040A). Also write the name and taxpayer identification number of the person for whom you paid the prior year's expenses. Then add this credit to the amount on line 9, and replace the amount on line 9 with the total.

Example. In 2001, Sam and Kate had child-care expenses of \$2,600 for their 12-year-old child. Of the \$2,600, they paid \$2,000 in 2001 and \$600 in 2002. Their adjusted gross income for 2001 was \$30,000. Sam's earned income of \$14,000 was less than Kate's earned income. A credit

Filled-In Worksheet 1. Worksheet for 2001 Expenses Paid in 2002— Illustration for Sam and Kate's Example.

(Note: Use this worksheet to figure the credit you may claim for 2001 expenses paid in 2002.)



1. Enter your 2001 qualified expenses paid in 2001	1. <u> \$ 2,000</u>
2. Enter your 2001 qualified expenses paid in 2002	2. <u> 600</u>
3. Add the amounts on lines 1 and 2	3. <u> 2,600</u>
4. Enter \$2,400 if care was for one qualifying person (\$4,800 if for two or more)	4. <u> 2,400</u>
5. Enter any dependent care benefits received for 2001 and excluded from your income (from line 18 of 2001 Form 2441 or Schedule 2 (Form 1040A))	5. <u> 0</u>
6. Subtract amount on line 5 from amount on line 4 and enter the result	6. <u> 2,400</u>
7. Compare your earned income for 2001 and your spouse's earned income for 2001 and enter the smaller amount	7. <u> 14,000</u>
8. Compare the amounts on lines 3, 6, and 7 and enter the smallest amount	8. <u> 2,400</u>
9. Enter the amount on which you figured the credit for 2001 (from line 6 of 2001 Form 2441 or Schedule 2 (Form 1040A))	9. <u> 2,000</u>
10. Subtract amount on line 9 from amount on line 8 and enter the result. If zero or less, stop here. You cannot increase your credit by any previous year's expenses	10. <u> 400</u>
11. Enter your 2001 adjusted gross income (from line 33 of your 2001 Form 1040 or line 19 of your 2001 Form 1040A)	11. <u> 30,000</u>
12. Find your 2001 adjusted gross income in the table of percentages (shown earlier) and enter the corresponding decimal amount here	12. <u> .20</u>
13. Multiply line 10 by line 12. Add this amount to your 2002 credit and enter the total on line 9 of your 2002 Form 2441 or Schedule 2 (Form 1040A). Write "CPYE," the amount of this credit for a prior year's expenses, and the name and taxpayer identification number of the person for whom you paid the prior year's expenses on the dotted line next to line 9 of Form 2441 or in the space to the left of line 9 on Schedule 2 (Form 1040A)	13. <u> \$ 80</u>

for their 2001 expenses paid in 2002 is not allowed in 2001. It is allowed for the 2002 tax year, but they must use their adjusted gross income for 2001 to compute the amount. The worksheet they use to figure this credit is shown on the previous page.

Sam and Kate add the \$80 from line 13 of this worksheet to their 2002 credit and enter the total on line 9 of their Schedule 2 (Form 1040A). They enter "CPYE \$80" and their child's name and SSN in the space to the left of line 9.

How To Claim the Credit

To claim the credit, you can file Form 1040 or Form 1040A. You cannot claim the credit on Form 1040EZ.

Form 1040. You must complete **Form 2441** and attach it to your Form 1040. Enter the credit on line 46 of your Form 1040.

Form 1040A. You must complete **Schedule 2** (Form 1040A) and attach it to your Form 1040A. Enter the credit on line 29 of your Form 1040A.

Limit on credit. The amount of credit you can claim is limited to the amount of your regular tax (after reduction by any allowable foreign tax credit) plus your alternative minimum tax, if any. For more information, see Form 2441 or Schedule 2 (Form 1040A).

Tax credit not refundable. You cannot get a refund for any part of the credit that is more than this limit.



Recordkeeping. You should keep records of your work-related expenses. Also, if your dependent or spouse is not able to care for himself or herself, your records should show both the nature and length of the disability. Other records you should keep to support your claim for the credit are described under *Provider Identification Test*, earlier.

Employment Taxes for Household Employers

If you pay someone to come to your home and care for your dependent or spouse, you may be a household em-

ployer. If you are a household employer, you will need an employer identification number (EIN) and you may have to pay employment taxes. If the individuals who work in your home are self-employed, you are not liable for any of the taxes discussed in this section. Self-employed persons who are in business for themselves are not household employees. Usually, you are **not** a household employer if the person who cares for your dependent or spouse does so at his or her home or place of business.

If you use a placement agency that exercises control over what work is done and how it will be done by a babysitter or companion who works in your home, that person is not your employee. This control could include providing rules of conduct and appearance and requiring regular reports. In this case, you do not have to pay employment taxes. But, if an agency merely gives you a list of sitters and you hire one from that list, the sitter may be your employee.

If you have a household employee you may be subject to:

- 1) Social security and Medicare taxes,
- 2) Federal unemployment tax, and
- 3) Federal income tax withholding.

Social security and Medicare taxes are generally withheld from the employee's pay and matched by the employer. Federal unemployment (FUTA) tax is paid by the employer only and provides for payments of unemployment compensation to workers who have lost their jobs. Federal income tax is withheld from the employee's total pay if the employee asks you to do so and you agree.

For more information on a household employer's tax responsibilities, see Publication 926 and Schedule H (Form 1040) and its instructions.

State employment tax. You may also have to pay state unemployment tax. Contact your state unemployment tax office for information. You should also find out whether you need to pay or collect other state employment taxes or carry worker's compensation insurance. A list of state unemployment tax agencies, including addresses and phone numbers, is in Publication 926.

Examples

The following examples show how to figure the credit for child and dependent care expenses. A filled-in page 1 of Schedule 2 (Form 1040A) that illustrates *Example 1* and a filled-in Form 2441 (filed with Form 1040) that illustrates *Example 2* are shown after the examples.

Example 1. Child Care — Two Children

Jerry and Ann Jones are married and keep up a home for their two preschool children, ages 2 and 4. They claim their children as dependents and file a joint return using Form 1040A. Their adjusted gross income (AGI) is \$27,500. Jerry earned \$12,500 and Ann earned \$15,000.

During the year, they pay work-related expenses of \$3,000 for child care for their son Daniel at a neighbor's home and \$2,200 for child care for their daughter Amy at Pine Street Nursery School.

They figure their credit on Schedule 2 as follows.

1)	Child care provided by their neighbor	\$ 3,000
2)	Child care provided by the nursery school	<u>+2,200</u>
3)	Total work-related expenses	\$ 5,200
4)	Dollar limit	\$ <u>4,800</u>
5)	Lesser of expenses paid (\$5,200) or dollar limit (\$4,800)	\$ 4,800
6)	Percentage for AGI of \$27,500	<u>21%(.21)</u>
7)	Multiply the amount on line 5 by the percentage on line 6 (\$4,800 x .21)	\$ 1,008
8)	Enter the amount from line 28 of Form 1040A	\$ 768
9)	Credit (Enter the smaller of line 7 or line 8)	\$ <u>768</u>

The amount of credit they can claim is limited to their tax, \$768.

Example 2. Dependent Care Benefits

Joan Thomas is divorced and has two children, ages 3 and 9. She works at ACME Computers. Her adjusted gross income (AGI) is \$29,000, and the entire amount is earned income.

Joan's younger child (Susan) stays at her employer's on-site child-care center while she works. The benefits from this child-care center qualify to be excluded from her income. Her employer reports the value of this service as \$3,000 for the year. This \$3,000 is shown in box 10 of her Form W-2, but is not included in taxable wages in box 1.

A neighbor cares for Joan's older child (Seth) after school, on holidays, and during the summer. She pays her neighbor \$2,400 for this care.

Joan figures her credit on Form 2441 as follows.

1)	Work-related expenses Joan paid	\$ 2,400
2)	Dollar limit (2 or more qualified individuals)	\$ 4,800
3)	Minus: Dependent care benefits excluded from Joan's income	<u>-3,000</u>
4)	Reduced dollar limit	\$ <u>1,800</u>
5)	Lesser of expenses paid (\$2,400) or dollar limit (\$1,800)	\$ 1,800
6)	Percentage for AGI of \$29,000	<u>20%(.20)</u>
7)	Multiply the amount on line 5 by the percentage amount on line 6	\$ 360
8)	Enter the amount from Form 1040, line 44	\$ 1,469
9)	Enter any amount from Form 1040, line 45	<u>-0-</u>
10)	Subtract line 9 from line 8	\$ 1,469
11)	Credit (Enter the smaller of line 7 or line 10)	\$ <u>360</u>

Schedule 2
(Form 1040A)

Department of the Treasury—Internal Revenue Service

Child and Dependent Care Expenses for Form 1040A Filers

2002

OMB No. 1545-0085

Name(s) shown on Form 1040A JERRY & ANN	JONES	Your social security number 246 ; 00 ; 2468
--	-------	--

Before you begin: You need to understand the following terms. See **Definitions** on page 1 of the separate instructions.
• Dependent Care Benefits • Qualifying Person(s) • Qualified Expenses • Earned Income

Part I Persons or organizations who provided the care	1		(a) Care provider's name	(b) Address (number, street, apt. no., city, state, and ZIP code)	(c) Identifying number (SSN or EIN)	(d) Amount paid (see instructions)
		SUE SMITH	413 MAPLE STREET ANYTOWN, PA 18605	132 - 00 - 5467	3,000	
	PINE STREET NURSERY SCHOOL	706 PINE STREET ANYTOWN, PA 18605	10 - 6754321	2,200		

(If you need more space, use the bottom of page 2.)

You must complete this part.

Did you receive dependent care benefits?	<input type="checkbox"/> No	→ Complete only Part II below.
	<input type="checkbox"/> Yes	→ Complete Part III on the back next.

Caution. If the care was provided in your home, you may owe employment taxes. If you do, you must use Form 1040. See **Schedule H** and its instructions for details.

Part II 2 Information about your **qualifying person(s)**. If you have more than two qualifying persons, see the instructions.

Credit for child and dependent care expenses	3		(a) Qualifying person's name	(b) Qualifying person's social security number	(c) Qualified expenses you incurred and paid in 2002 for the person listed in column (a)
	First	Last			
	DANIEL	JONES	123 ; 00 ; 9876	3,000	
	AMY	JONES	123 ; 00 ; 6789	2,200	

3 Add the amounts in column (c) of line 2. **Do not** enter more than \$2,400 for one qualifying person or \$4,800 for two or more persons. If you completed Part III, enter the amount from line 26. 3 4,800

4 Enter your **earned income**. 4 12,500

5 If married filing jointly, enter your spouse's earned income (if your spouse was a student or was disabled, see the instructions); **all others**, enter the amount from line 4. 5 15,000

6 Enter the **smallest** of line 3, 4, or 5. 6 4,800

7 Enter the amount from Form 1040A, line 22. 7 27,500

8 Enter on line 8 the decimal amount shown below that applies to the amount on line 7.

If line 7 is:			If line 7 is:		
Over	But not over	Decimal amount is	Over	But not over	Decimal amount is
\$0—10,000		.30	\$20,000—22,000		.24
10,000—12,000		.29	22,000—24,000		.23
12,000—14,000		.28	24,000—26,000		.22
14,000—16,000		.27	26,000—28,000		.21
16,000—18,000		.26	28,000—No limit		.20
18,000—20,000		.25			

9 Multiply **line 6** by the decimal amount on line 8. If you paid 2001 expenses in 2002, see the instructions. 8 X .21
9 1,008

10 Enter the amount from Form 1040A, line 28. 10 768

11 **Credit for child and dependent care expenses.** Enter the **smaller** of line 9 or line 10 here and on Form 1040A, line 29. 11 768

Child and Dependent Care Expenses

▶ Attach to Form 1040.
 ▶ See separate instructions.

Name(s) shown on Form 1040

Joan Thomas

Your social security number
 559 00 3436

Before you begin: You need to understand the following terms. See **Definitions** on page 1 of the instructions.

- **Dependent Care Benefits**
- **Qualifying Person(s)**
- **Qualified Expenses**
- **Earned Income**

Part I **Persons or Organizations Who Provided the Care**—You must complete this part.
 (If you need more space, use the bottom of page 2.)

1	(a) Care provider's name	(b) Address (number, street, apt. no., city, state, and ZIP code)	(c) Identifying number (SSN or EIN)	(d) Amount paid (see instructions)
	Pat Green	12 Ash Avenue Hometown, TX 75240	240-00-3811	2,400
	ACME Computers	(See W-2)		

Did you receive dependent care benefits?

No → Complete only Part II below.

Yes → Complete Part III on the back next.

Caution. If the care was provided in your home, you may owe employment taxes. See the instructions for Form 1040, line 60.

Part II **Credit for Child and Dependent Care Expenses**

2 Information about your **qualifying person(s)**. If you have more than two qualifying persons, see the instructions.

(a) Qualifying person's name		(b) Qualifying person's social security number	(c) Qualified expenses you incurred and paid in 2002 for the person listed in column (a)
First	Last		
Seth	Thomas	559 00 1234	2,400
Susan	Thomas	559 00 5678	

3 Add the amounts in column (c) of line 2. **Do not** enter more than \$2,400 for one qualifying person or \$4,800 for two or more persons. If you completed Part III, enter the amount from line 26

3		1,800
----------	--	-------

4 Enter your **earned income**

4		29,000
----------	--	--------

5 If married filing jointly, enter your spouse's earned income (if your spouse was a student or was disabled, see the instructions); **all others**, enter the amount from line 4

5		29,000
----------	--	--------

6 Enter the **smallest** of line 3, 4, or 5

6		1,800
----------	--	-------

7 Enter the amount from Form 1040, line 36 **7** | 29,000 |

8 Enter on line 8 the decimal amount shown below that applies to the amount on line 7

If line 7 is:			If line 7 is:		
Over	But not over	Decimal amount is	Over	But not over	Decimal amount is
\$0—10,000		.30	\$20,000—22,000		.24
10,000—12,000		.29	22,000—24,000		.23
12,000—14,000		.28	24,000—26,000		.22
14,000—16,000		.27	26,000—28,000		.21
16,000—18,000		.26	28,000—No limit		.20
18,000—20,000		.25			

8		X . 20
----------	--	--------

9 Multiply line 6 by the decimal amount on line 8. If you paid 2001 expenses in 2002, see the instructions

9		360
----------	--	-----

10 Enter the amount from Form 1040, line 44, minus any amount on Form 1040, line 45

10		1,469
-----------	--	-------

11 **Credit for child and dependent care expenses.** Enter the **smaller** of line 9 or line 10 here and on Form 1040, line 46

11		360
-----------	--	-----

For Paperwork Reduction Act Notice, see page 3 of the instructions.

Cat. No. 11862M

Form **2441** (2002)

Part III Dependent Care Benefits

12	Enter the total amount of dependent care benefits you received for 2002. This amount should be shown in box 10 of your W-2 form(s). Do not include amounts that were reported to you as wages in box 1 of Form(s) W-2	12	3,000
13	Enter the amount forfeited, if any (see the instructions)	13	
14	Subtract line 13 from line 12	14	3,000
15	Enter the total amount of qualified expenses incurred in 2002 for the care of the qualifying person(s)	15	5,400
16	Enter the smaller of line 14 or 15	16	3,000
17	Enter your earned income	17	29,000
18	Enter the amount shown below that applies to you. <ul style="list-style-type: none"> • If married filing jointly, enter your spouse's earned income (if your spouse was a student or was disabled, see the instructions for line 5). • If married filing separately, see the instructions for the amount to enter. • All others, enter the amount from line 17. 	18	29,000
19	Enter the smallest of line 16, 17, or 18	19	3,000
20	Excluded benefits. Enter here the smaller of the following: <ul style="list-style-type: none"> • The amount from line 19 or • \$5,000 (\$2,500 if married filing separately and you were required to enter your spouse's earned income on line 18). 	20	3,000
21	Taxable benefits. Subtract line 20 from line 14. Also, include this amount on Form 1040, line 7. On the dotted line next to line 7, enter "DCB"	21	-0-

To claim the child and dependent care credit, complete lines 22–26 below.

22	Enter \$2,400 (\$4,800 if two or more qualifying persons)	22	4,800
23	Enter the amount from line 20	23	3,000
24	Subtract line 23 from line 22. If zero or less, stop . You cannot take the credit. Exception. If you paid 2001 expenses in 2002, see the instructions for line 9	24	1,800
25	Complete line 2 on the front of this form. Do not include in column (c) any benefits shown on line 20 above. Then, add the amounts in column (c) and enter the total here	25	2,400
26	Enter the smaller of line 24 or 25. Also, enter this amount on line 3 on the front of this form and complete lines 4–11	26	1,800

How To Get Tax Help

You can get help with unresolved tax issues, order free publications and forms, ask tax questions, and get more information from the IRS in several ways. By selecting the method that is best for you, you will have quick and easy access to tax help.

Contacting your Taxpayer Advocate. If you have attempted to deal with an IRS problem unsuccessfully, you should contact your Taxpayer Advocate.

The Taxpayer Advocate represents your interests and concerns within the IRS by protecting your rights and resolving problems that have not been fixed through normal channels. While Taxpayer Advocates cannot change the tax law or make a technical tax decision, they can clear up problems that resulted from previous contacts and ensure that your case is given a complete and impartial review.

To contact your Taxpayer Advocate:

- Call the Taxpayer Advocate at **1-877-777-4778**.
- Call, write, or fax the Taxpayer Advocate office in your area.
- Call **1-800-829-4059** if you are a TTY/TDD user.

For more information, see Publication 1546, *The Taxpayer Advocate Service of the IRS*.

Free tax services. To find out what services are available, get Publication 910, *Guide to Free Tax Services*. It contains a list of free tax publications and an index of tax topics. It also describes other free tax information services, including tax education and assistance programs and a list of TeleTax topics.



Personal computer. With your personal computer and modem, you can access the IRS on the Internet at **www.irs.gov**. While visiting our web site, you can:

- See answers to frequently asked tax questions or request help by e-mail.
- Download forms and publications or search for forms and publications by topic or keyword.
- Order IRS products on-line.
- View forms that may be filled in electronically, print the completed form, and then save the form for recordkeeping.
- View Internal Revenue Bulletins published in the last few years.
- Search regulations and the Internal Revenue Code.
- Receive our electronic newsletters on hot tax issues and news.
- Learn about the benefits of filing electronically (IRS e-file).
- Get information on starting and operating a small business.

You can also reach us with your computer using File Transfer Protocol at **ftp.irs.gov**.



TaxFax Service. Using the phone attached to your fax machine, you can receive forms and instructions by calling **703-368-9694**. Follow the directions from the prompts. When you order forms, enter the catalog number for the form you need. The items you request will be faxed to you.

For help with transmission problems, call the FedWorld Help Desk at **703-487-4608**.



Phone. Many services are available by phone.

- *Ordering forms, instructions, and publications.* Call **1-800-829-3676** to order current and prior year forms, instructions, and publications.
- *Asking tax questions.* Call the IRS with your tax questions at **1-800-829-1040**.
- *Solving problems.* Take advantage of Everyday Tax Solutions service by calling your local IRS office to set up an in-person appointment at your convenience. Check your local directory assistance or **www.irs.gov** for the numbers.
- *TTY/TDD equipment.* If you have access to TTY/TDD equipment, call **1-800-829-4059** to ask tax questions or to order forms and publications.
- *TeleTax topics.* Call **1-800-829-4477** to listen to pre-recorded messages covering various tax topics.

Evaluating the quality of our telephone services. To ensure that IRS representatives give accurate, courteous, and professional answers, we use several methods to evaluate the quality of our telephone services. One method is for a second IRS representative to sometimes listen in on or record telephone calls. Another is to ask some callers to complete a short survey at the end of the call.



Walk-in. Many products and services are available on a walk-in basis.

- *Products.* You can walk in to many post offices, libraries, and IRS offices to pick up certain forms, instructions, and publications. Some IRS offices, libraries, grocery stores, copy centers, city and county governments, credit unions, and office supply stores have an extensive collection of products available to print from a CD-ROM or photocopy from reproducible proofs. Also, some IRS offices and libraries have the Internal Revenue Code, regulations, Internal Revenue Bulletins, and Cumulative Bulletins available for research purposes.
- *Services.* You can walk in to your local IRS office to ask tax questions or get help with a tax problem. Now you can set up an appointment by calling your local IRS office number and, at the prompt, leaving a

message requesting Everyday Tax Solutions help. A representative will call you back within 2 business days to schedule an in-person appointment at your convenience.



Mail. You can send your order for forms, instructions, and publications to the Distribution Center nearest to you and receive a response within 10 workdays after your request is received. Find the address that applies to your part of the country.

- **Western part of U.S.:**

Western Area Distribution Center
Rancho Cordova, CA 95743-0001

- **Central part of U.S.:**

Central Area Distribution Center
P.O. Box 8903
Bloomington, IL 61702-8903

- **Eastern part of U.S. and foreign addresses:**

Eastern Area Distribution Center
P.O. Box 85074
Richmond, VA 23261-5074



CD-ROM for tax products. You can order IRS Publication 1796, *Federal Tax Products on CD-ROM*, and obtain:

- Current tax forms, instructions, and publications.

- Prior-year tax forms and instructions.
- Popular tax forms that may be filled in electronically, printed out for submission, and saved for record-keeping.
- Internal Revenue Bulletins.

The CD-ROM can be purchased from National Technical Information Service (NTIS) by calling **1-877-233-6767** or on the Internet at **<http://www.irs.gov/cdorders>**. The first release is available in early January and the final release is available in late February.



CD-ROM for small businesses. IRS Publication 3207, *Small Business Resource Guide*, is a must for every small business owner or any taxpayer about to start a business. This handy, interactive CD contains all the business tax forms, instructions and publications needed to successfully manage a business. In addition, the CD provides an abundance of other helpful information, such as how to prepare a business plan, finding financing for your business, and much more. The design of the CD makes finding information easy and quick and incorporates file formats and browsers that can be run on virtually any desktop or laptop computer.

It is available in March. You can get a free copy by calling **1-800-829-3676** or by visiting the website at **www.irs.gov/smallbiz**.



<hr/> <hr/>		
A		
Adoption	4	
Aliens	4	
Alternative minimum tax	14	
Amount of credit	13	
Assistance (See Tax help)		
ATIN	4	
<hr/> <hr/>		
C		
Camp, overnight	8	
Care:		
For qualifying person	8	
Outside home	8	
Provider	9	
Child of divorced or separated parents	4	
Comments on publication	2	
Community property laws	11	
Cook	8	
Costs of keeping up home	6	
Custodial parent	6	
<hr/> <hr/>		
D		
Death of spouse	9, 11	
Dependent care benefits	4, 10, 12, 15	
Dependent care center	8	
Divorced parents	4, 6	
Dollar limit	12	
Due diligence	9	
<hr/> <hr/>		
E		
Earned income:		
Inclusions	6	
Nontaxable	7	
What is not	7	
Earned income limit	11	
Earned income test	6	
Employer-provided dependent care benefits	10, 12	
Employment taxes	14	
Expenses:		
Medical	10	
Paid in following year	10, 13	
Prepaid	10	
Reimbursed	10	
Work-related	7, 10	
<hr/> <hr/>		
F		
Forfeitures	10	
Forms:		
2441	14	
8332	4	
W-10	9	
W-2	10	
Free tax services	19	
<hr/> <hr/>		
H		
Help (See Tax help)		
Household employer	9, 14	
Household services	8	
Housekeeper	8	
How to claim	14	
<hr/> <hr/>		
I		
Identification number, qualifying person	4	
Identification of care provider	9	
ITIN	4	
<hr/> <hr/>		
J		
Joint return test	9	
<hr/> <hr/>		
K		
Keeping up a home test	6	
<hr/> <hr/>		
L		
Limits:		
Dollar	12	
Earned income	11	
Looking for work	7	
<hr/> <hr/>		
M		
Maid	8	
Meals and lodging for housekeeper	9	
Medical expenses	10	
More information (See Tax help)		
<hr/> <hr/>		
N		
Nontaxable earned income	7	
Not able to care for oneself	4, 7, 11	
<hr/> <hr/>		
P		
Provider identification test	9	
<hr/> <hr/>		
		Public assistance benefits 6
		Publications (See Tax help)
<hr/> <hr/>		
		Q
		Qualifying person 4
<hr/> <hr/>		
		R
		Recordkeeping 9, 14
		Reduced dollar limit 12
		Reimbursed expenses 10
		Relatives, payments to 9
<hr/> <hr/>		
		S
		Schedule 2 (Form 1040A) 14
		Self-employment earnings 11
		Separated parents 4, 6, 9, 11
		Social security number 4
		Spouse:
		Divorced 4, 6
		Not able to care for self 7, 11
		Separated 4, 6, 9, 11
		Student 7, 11
		Surviving 9, 11
		Student-spouse 7, 11
		Suggestions for publication 2
<hr/> <hr/>		
		T
		Tax help 19
		Taxes on wages 9, 14
		Taxpayer Advocate 19
		Taxpayer identification number 4
		Transportation 8
		TTY/TDD information 19
<hr/> <hr/>		
		U
		Upkeep of home, costs 6
<hr/> <hr/>		
		V
		Volunteer work 8
<hr/> <hr/>		
		W
		Wages, taxes on 9, 14
		Work-related expense test 7
<hr/> <hr/>		
		■

Tax Publications for Individual Taxpayers

See *How To Get Tax Help* for a variety of ways to get publications, including by computer, phone, and mail.

General Guides

- 1 Your Rights as a Taxpayer
- 17 Your Federal Income Tax (For Individuals)
- 334 Tax Guide for Small Business (For Individuals Who Use Schedule C or C-EZ)
- 509 Tax Calendars for 2003
- 553 Highlights of 2002 Tax Changes
- 910 Guide to Free Tax Services

Specialized Publications

- 3 Armed Forces' Tax Guide
- 54 Tax Guide for U.S. Citizens and Residents Aliens Abroad
- 225 Farmer's Tax Guide
- 378 Fuel Tax Credits and Refunds
- 463 Travel, Entertainment, Gift, and Car Expenses
- 501 Exemptions, Standard Deduction, and Filing Information
- 502 Medical and Dental Expenses
- 503 Child and Dependent Care Expenses
- 504 Divorced or Separated Individuals
- 505 Tax Withholding and Estimated Tax
- 508 Tax Benefits for Work-Related Education
- 514 Foreign Tax Credit for Individuals
- 516 U.S. Government Civilian Employees Stationed Abroad
- 517 Social Security and Other Information for Members of the Clergy and Religious Workers
- 519 U.S. Tax Guide for Aliens
- 520 Scholarships and Fellowships
- 521 Moving Expenses
- 523 Selling Your Home
- 524 Credit for the Elderly or the Disabled
- 525 Taxable and Nontaxable Income
- 526 Charitable Contributions
- 527 Residential Rental Property
- 529 Miscellaneous Deductions

- 530 Tax Information for First-Time Homeowners
- 531 Reporting Tip Income
- 533 Self-Employment Tax
- 534 Depreciating Property Placed in Service Before 1987
- 536 Net Operating Losses (NOLs) for Individuals, Estates, and Trusts
- 537 Installment Sales
- 541 Partnerships
- 544 Sales and Other Dispositions of Assets
- 547 Casualties, Disasters, and Thefts
- 550 Investment Income and Expenses
- 551 Basis of Assets
- 552 Recordkeeping for Individuals
- 554 Older Americans' Tax Guide
- 555 Community Property
- 556 Examination of Returns, Appeal Rights, and Claims for Refund
- 559 Survivors, Executors, and Administrators
- 561 Determining the Value of Donated Property
- 564 Mutual Fund Distributions
- 570 Tax Guide for Individuals With Income From U.S. Possessions
- 571 Tax-Sheltered Annuity Plans (403(b) Plans)
- 575 Pension and Annuity Income
- 584 Casualty, Disaster, and Theft Loss Workbook (Personal-Use Property)
- 587 Business Use of Your Home (Including Use by Day-Care Providers)
- 590 Individual Retirement Arrangements (IRAs)
- 593 Tax Highlights for U.S. Citizens and Residents Going Abroad
- 594 The IRS Collection Process
- 595 Tax Highlights for Commercial Fishermen
- 596 Earned Income Credit (EIC)
- 721 Tax Guide to U.S. Civil Service Retirement Benefits

- 901 U.S. Tax Treaties
- 907 Tax Highlights for Persons with Disabilities
- 908 Bankruptcy Tax Guide
- 911 Direct Sellers
- 915 Social Security and Equivalent Railroad Retirement Benefits
- 919 How Do I Adjust My Tax Withholding?
- 925 Passive Activity and At-Risk Rules
- 926 Household Employer's Tax Guide
- 929 Tax Rules for Children and Dependents
- 936 Home Mortgage Interest Deduction
- 946 How To Depreciate Property
- 947 Practice Before the IRS and Power of Attorney
- 950 Introduction to Estate and Gift Taxes
- 967 IRS Will Figure Your Tax
- 968 Tax Benefits for Adoption
- 969 Medical Savings Accounts (MSAs)
- 970 Tax Benefits for Education
- 971 Innocent Spouse Relief
- 972 Child Tax Credit (For Individuals Sent Here From the Form 1040 or 1040A Instructions)
- 1542 Per Diem Rates
- 1544 Reporting Cash Payments of Over \$10,000
- 1546 The Taxpayer Advocate Service of the IRS

Spanish Language Publications

- 1SP Derechos del Contribuyente
- 579SP Cómo Preparar la Declaración de Impuesto Federal
- 594SP Comprendiendo el Proceso de Cobro
- 596SP Crédito por Ingreso del Trabajo
- 850 English-Spanish Glossary of Words and Phrases Used in Publications Issued by the Internal Revenue Service
- 1544SP Informe de Pagos en Efectivo en Exceso de \$10,000 (Recibidos en una Ocupación o Negocio)

Commonly Used Tax Forms

See *How To Get Tax Help* for a variety of ways to get forms, including by computer, fax, phone, and mail. For fax orders only, use the catalog number when ordering.

Form Number and Title	Catalog Number	Form Number and Title	Catalog Number
1040 U.S. Individual Income Tax Return	11320	2106 Employee Business Expenses	11700
Sch A&B Itemized Deductions & Interest and Ordinary Dividends	11330	2106-EZ Unreimbursed Employee Business Expenses	20604
Sch C Profit or Loss From Business	11334	2210 Underpayment of Estimated Tax by Individuals, Estates, and Trusts	11744
Sch C-EZ Net Profit From Business	14374	2441 Child and Dependent Care Expenses	11862
Sch D Capital Gains and Losses	11338	2848 Power of Attorney and Declaration of Representative	11980
Sch D-1 Continuation Sheet for Schedule D	10424	3903 Moving Expenses	12490
Sch E Supplemental Income and Loss	11344	4562 Depreciation and Amortization	12906
Sch EIC Earned Income Credit	13339	4868 Application for Automatic Extension of Time To File U.S. Individual Income Tax Return	13141
Sch F Profit or Loss From Farming	11346	4952 Investment Interest Expense Deduction	13177
Sch H Household Employment Taxes	12187	5329 Additional Taxes on Qualified Plans (Including IRAs) and Other Tax-Favored Accounts	13329
Sch J Farm Income Averaging	25513	6251 Alternative Minimum Tax—Individuals	13600
Sch R Credit for the Elderly or the Disabled	11359	8283 Noncash Charitable Contributions	62299
Sch SE Self-Employment Tax	11358	8582 Passive Activity Loss Limitations	63704
1040A U.S. Individual Income Tax Return	11327	8606 Nondeductible IRAs	63966
Sch 1 Interest and Ordinary Dividends for Form 1040A Filers	12075	8812 Additional Child Tax Credit	10644
Sch 2 Child and Dependent Care Expenses for Form 1040A Filers	10749	8822 Change of Address	12081
Sch 3 Credit for the Elderly or the Disabled for Form 1040A Filers	12064	8829 Expenses for Business Use of Your Home	13232
1040EZ Income Tax Return for Single and Joint Filers With No Dependents	11329	8863 Education Credits	25379
1040-ES Estimated Tax for Individuals	11340	9465 Installment Agreement Request	14842
1040X Amended U.S. Individual Income Tax Return	11360		