

**TECHNICAL EXHIBIT TE-1
GENERAL LOCATION AND SITE INFORMATION**

1. Location: **IRS Center and IRS Child Care 201 W River Center Blvd., Covington, KY 41011, Stop 62**
2. Mission: Operations and Maintenance Services.
3. Climate: Data see figure 1.11 below
4. Population (Lo/Hi): The IRS staffing population in the facility is shown below by month over the period of **2013**

Month in 2013	Facility Population
January	1,255
February	1,600
March	1,701
April	1,832
May	1,592
June	1,480
July	1,459
August	1,432
September	1,387
October	1,263
November	1,263
December	1,357

5. Facility Data:
Number of buildings: 2

Total square feet:

Building #: KY0085, constructed 1963, 365,000 SF

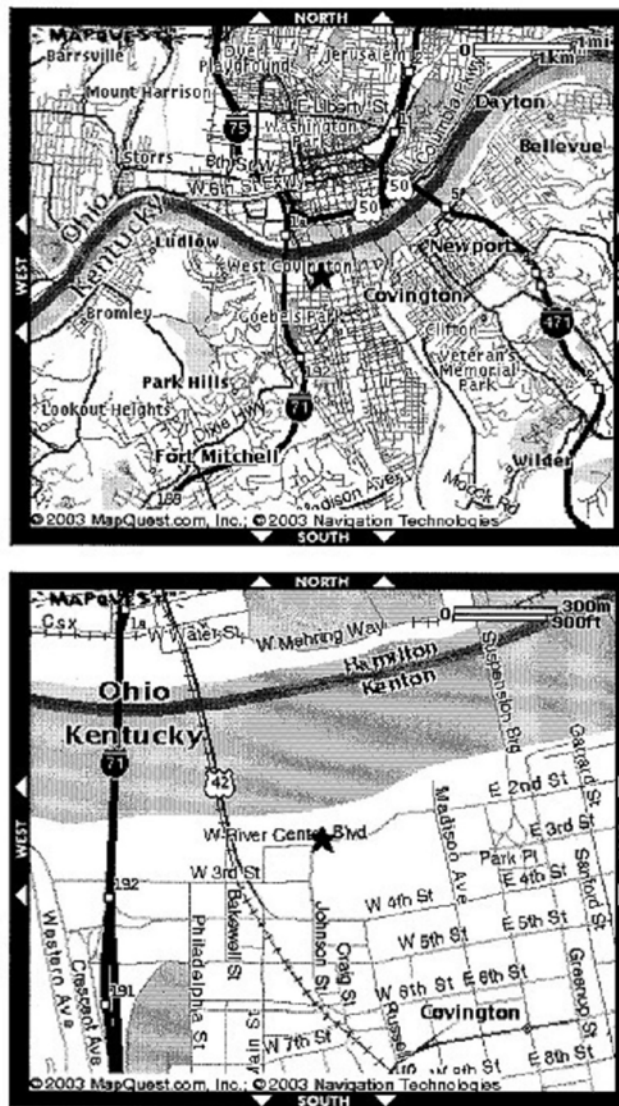
Building #: KY0012, constructed 1994 11,500 SF

TECHNICAL EXHIBIT TE-1

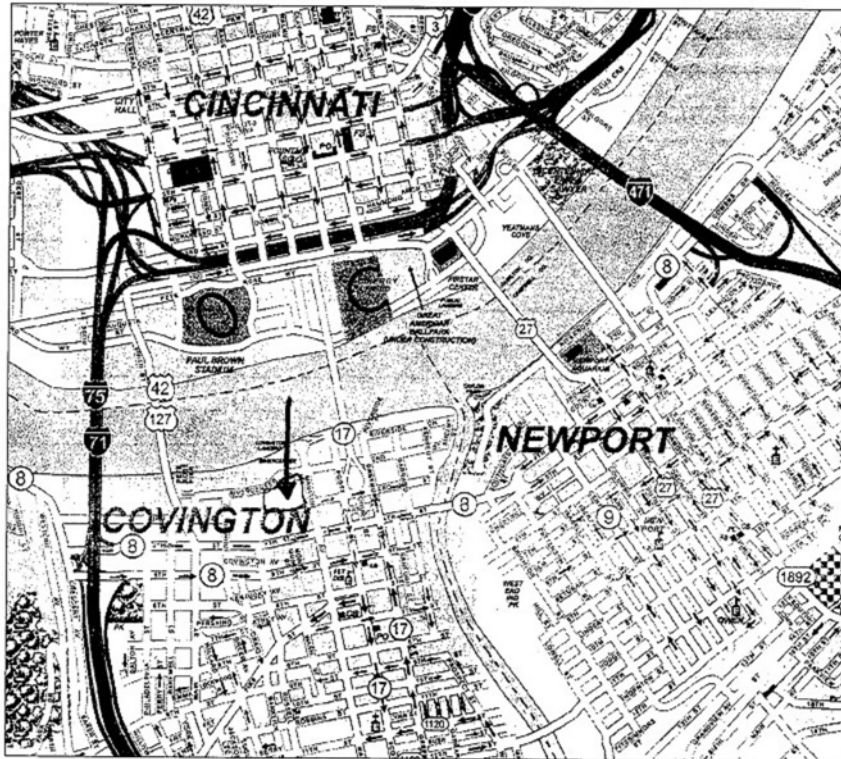
GENERAL LOCATION AND SITE INFORMATION

Facility Diagram:

GENERAL LOCATION AND SITE INFORMATION

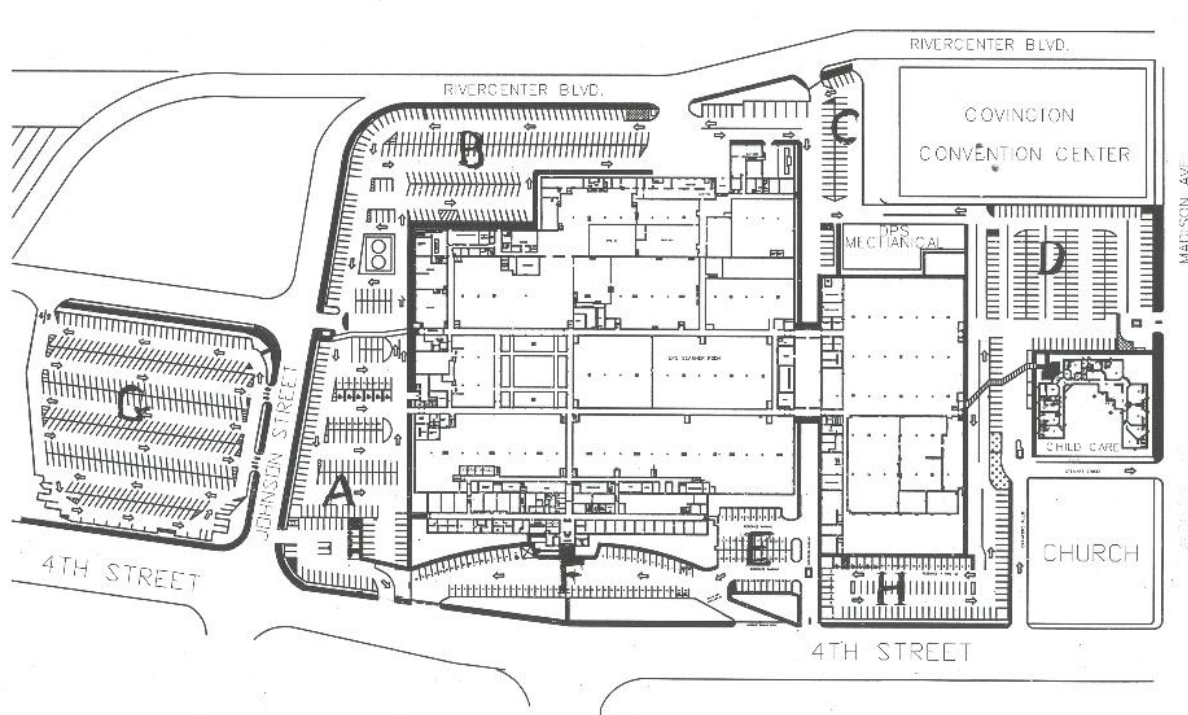


TECHNICAL EXHIBIT TE-1
GENERAL LOCATION AND SITE INFORMATION



GENERAL LOCATION AND SITE INFORMATION

TECHNICAL EXHIBIT TE-1
GENERAL LOCATION AND SITE INFORMATION



TECHNICAL EXHIBIT TE-1 GENERAL LOCATION AND SITE INFORMATION



TECHNICAL EXHIBIT TE-1 **GENERAL LOCATION AND SITE INFORMATION**

GENERAL LOCATION AND SITE INFORMATION

Figure 1.11: Covington Climate Data

Month	Average high	Average low	Warmest ever	Coldest ever	Average dew point	Average precipitation
JAN.	38	21	74	-25	22	3.2
FEB.	42	24	73	-15	24	2.8
MARCH	52	33	84	-11	31	3.9
APRIL	64	43	89	15	40	3.5
MAY	74	52	93	27	51	4.0
JUNE	82	61	102	39	60	3.8
JULY	86	65	103	47	64	4.1
AUG.	85	63	102	43	63	3.3
SEP.	78	56	102	31	56	2.8
OCT.	67	45	89	16	44	2.7
NOV.	53	35	81	0	34	3.4
DEC.	42	26	75	-20	26	3.1

Latitude: 39 degrees, 04 minutes north
Longitude: 84 degrees, 40 minutes west